



1401 St. Charles Road  
Maywood, IL 60153

PRSR STD  
U.S. POSTAGE  
PAID  
PERMIT# 384  
OAK PARK, IL



# OCTOBER VALUES FROM



**AETNA**  
PLYWOOD

Pricing good through 10/31/03 or while supplies last.

***D.R.I.V.E.*** *Dedication • Resource • Inventory • Value-added • Experience*

*We've got it like no other company in the business.*



# CFP 60's™

Introducing CFP 60's™ a new line of 60-inch-wide hardwood plywood from Columbia Forest Products. Produced on Columbia's innovative, new proprietary production line, these five-foot-wide panels can dramatically improve yield and reduce labor cost...which just happens to help improve profits. In fact, they're the ideal option for manufacturers looking to lower raw material and labor costs, as well as reduce waste.

Of course, having greater yield doesn't mean much without quality. And like all Columbia products, CFP 60's are of superior quality. They're available with either particleboard or MDF cores and manufactured using state-of-the-art technology. Plus, they're available with most major rotary and plain sliced veneers, as well as paper backing, for options that make them perfect for almost any project.

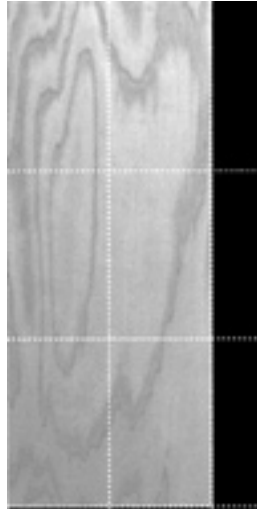
## CFP 60's PRODUCE BETTER YIELDS

This illustration is an example of increased yields for a 19-1/4" x 31-5/8" component utilizing a 5' x 8' panel. If 1,700 pieces were required, 284 four-foot panels would be used vs. 189 five-foot panels.

That's 95 fewer panels to handle with a 16% improvement in yield.



New 95% yield 5' x 8' Panel



Standard 79% yield 4' x 8' Panel

## Features & Benefits

- \* Better yield per panel for reduced waste and improved profits
- \* Multiple core and veneer choices to fit a variety of applications
- \* Large production volume for availability and quick delivery
- \* Small unit quantities available so you only purchase what's needed
- \* Available in a variety of hardwood face and back combinations, including paper backing

### IN STOCK AT AETNA TODAY

- 05-22-580 3/4" 5 x 8 PS Red Oak A/1 MDF SM&N
- 06-22-580 3/4" 5 x 8 PS White Maple A/1 MDF SM&N
- 09-22-580 3/4" 5 x 8 PS Cherry A/1 MDF SM&N

**ALL PANELS ARE 1/2" OVERSIZE**

**D.R.I.V.E.™ Dedication • Resource • Inventory • Value-added • Experience**  
*We've got it like no other company in the business.*



## THINK AETNA FOR YOUR FABRICATION NEEDS!

Description	Qty.	Size	Price
<b>Verticals</b>			
3/4" S411 W2S, 32mm drilling 5mm holes, edgeband 1 long with PVC	51 pcs	12 x 84	\$9.85 EA
	31 pcs	12 x 96	10.45 EA
	35 pcs	16 x 84	13.20 EA
	16 pcs	16 x 96	13.90 EA
<b>Drawer Fronts</b>			
3/4" S411 W2S, edgeband 4 sides with PVC	102 pcs	8 5/8 x 24 1/2	\$3.00 EA
<b>Cleat</b>			
3/4" S411 W2S, edgeband 1 long with PVC	30 pcs	2 1/2 x 96	\$3.05 EA
<b>Shelves</b>			
3/4" S411 W2S, edgeband 1 long with PVC	20 pcs	12 x 96	\$6.10 EA
3/4" S411 W2S, edgeband 1 long with PVC	15 pcs	16 x 96	\$7.40 EA
3/4" almond mel 2S, edgeband 1 long with PVC	68 pcs	14 x 97	\$5.15 EA
3/4" Oak mel 2S, edgeband 1 long with PVC	51 pcs	12 x 97	\$5.00 EA

**Pricing good through October 31, 2003 as supplies last.**

Add that neat, solid, smooth look to shelves, cabinets, tables, partitions and other case goods with 3mm PVC edgebanding.

### **AETNA CAN APPLY IT FOR YOU.**

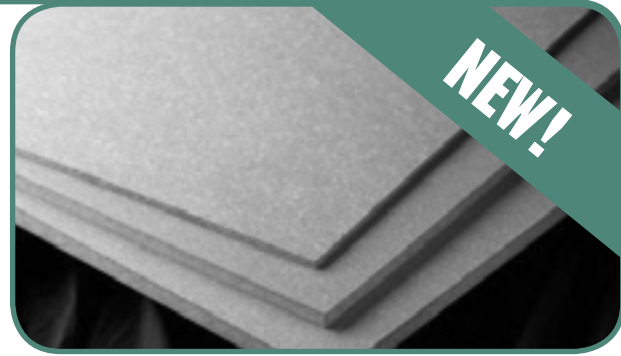
It has a lasting look of quality and durability which is ideal for institutional and residential markets.

**D.R.I.V.E.™ Dedication • Resource • Inventory • Value-added • Experience**

**FOR INFORMATION, CONTACT YOUR AETNA PLYWOOD REPRESENTATIVE AT 708-343-1515  
FAX YOUR ORDERS TO (WOOD) 708-343-1616 OR (LAMINATE) 708-343-1333.**



## PANEL PRODUCTS



INTRODUCING

**WOOD** (STALK™)



## Setting New Standards for Machinable Fiberboard

Aetna Plywood is pleased to become your source for Dow BioProducts Inc.'s WOODSTALK™ fiberboard in the Chicagoland area. Award-winning WOODSTALK is the next generation of engineered fiberboard made from annually renewable wheat-straw fiber and quality exterior-grade formaldehyde-free polyurethane resin. It meets or exceeds performance specifications of high-quality particleboard and MDF without associated formaldehyde and VOC emissions. It's also environmentally responsible using straw that would otherwise be burned every fall releasing greenhouse gasses to the atmosphere. And, it's competitively priced!

### JUST LOOK AT THE PERFORMANCE ADVANTAGES...

#### Excellent Machinability with Reduced Tool Wear

– Unique particle geometry produces intricate profiling, previously only available with high-quality particleboard and MDF. The clean wheat straw dramatically reduces cutting and routing tool wear, which trims your costs, maintenance and downtime, and increases productivity.

**Light, Even Color Takes Coatings Well** – Use with a variety of adhesive systems, paint, ink, stain, oil, lacquer, and polyurethane liquid coating systems with minimal “fiber pop” from water exposure. Consistent raw materials create a light, even-color surface, ideal for use under thin overlays or clear coated to attractively highlight the straw fibers.

**Smooth Surface** – Ideal for many laminating applications, including low basis weight papers, vinyls, foils, and real hardwood veneers.

**Moisture Resistance** – Exterior grade polyurethane resin holds its strength across moisture cycles making it suitable for interior applications with inadvertent contact with water.

**Lighter Weight** – Less weight than competing products eases handling and reduces shipping costs.



### AWARD-WINNING RECOGNITION AS A “GREEN” PRODUCT...

#### Winner of Top-10 Green Building Product Award

BuildingGreen Inc., publisher of Environmental Building News monthly, awarded WOODSTALK fiberboard a Top 10 new “green” building product in its GreenSpec® Directory, recognizing WOODSTALK's formaldehyde-free, low-emissions composition and use of annually renewable agrifiber.

#### Choosing WOODSTALK products contributes directly or indirectly to L.E.E.D.† credits...

- IEQ Credit 4.4 and 4.5 - Low-Emitting Materials
- MR Credit 4.1 and 4.2 - Recycled Content
- MR Credit 5.1 and 5.2 - Local/Regional Materials
- MR Credit 6 - Rapidly Renewable Materials
- MR Credit 7 - Certified Wood
- DE Credit 1.1 - Innovation in Design

#### AVAILABLE IN A VARIETY OF SIZES...

Aetna Plywood stocks WOODSTALK Gold Grade fiberboard in 4' x 8' and 4' x 10' panels in thicknesses of 1/4" to 1 1/8". We can also special-order panels from 4' to 5' wide and from 8' to 14' long.

† L.E.E.D - Leadership in Energy & Environmental Design building credits from United States Green Building Council

\* Trademark of The Dow Chemical Company

**FOR INFORMATION, CONTACT YOUR AETNA PLYWOOD REPRESENTATIVE AT 708-343-1515  
TOLL FREE FROM WISCONSIN AND INDIANA 800-222-9244 FAX 800-752-0767.**



# HARDWOOD PLYWOOD SPECIALS

# INVENTORY BLOWOUTS

Item No.	Description	Qty. Avail.	Price	Item No.	Description	Qty. Avail.	Price
<i>RED OAK</i>				<i>BIRCH</i>			
05-50-319	3mm 32-1/2x80-1/2 PS Red Oak Doorsins	767	\$5.25	06-22-611	3/4" 4x8 R/C White Birch B/2 WPF MDF Whole Piece Face	76	\$31.00
05-08-430	1/4" 4x8 RC Red Oak Shop VC From "A" Faces	28	\$19.00	06-36-715	1-1/4" 4x10 White Birch Shop VC Fall Down from "B/4" Panels	63	\$81.50
05-14-430	1/2" 4x8 Red Oak Shop VC-Lauan Bk	2	\$28.00	<i>WALNUT</i>			
05-22-459	3/4" 4x8 RC Red Oak B/4 MDF	8	\$26.35	07-08-428	1/4" 4x8 PS Walnut Shop VC Fall Down from "A/4" Panels	39	\$37.50
05-22-600	3/4" 4x8 RC red Oak A-PBC-Paper Oak Back	24	\$30.50	07-22-435	3/4" 4x8 PS Walnut Shop MDF Fall Down from "A/1" Panels	2	\$59.25
05-22-602	3/4" 4x8 RC Red Oak Shop PBC From "B" Faces	96	\$24.65	<i>KNOTTY PINE</i>			
05-22-498	3/4" 4x10 PS Red Oak Shop MDF From "A" Faces	17	\$52.25	09-22-454	3/4" 4x8 PS Knotty Pine Shop MDF Fall Down from "A/1" Panels	15	\$32.00
05-36-915	1-1/4" 4x8 RC Red Oak Shop VC From "A/4" Panels	47	\$43.00	<i>HONDURAS MAHOGANY</i>			
<i>MAPLE</i>				09-08-480	1/4" 4x8 PS Hond. Mahog. Shop VC Fall Down from "A/4" Panels	77	\$23.56
06-22-182	3/4" 4x8 Maple D3 VC w/Backer Poly Backer (.024)	140	\$33.80	<i>CHERRY</i>			
06-22-603	3/4" 4x8 RC White Maple WPF Shop PBC Fall Down from B/1 whole piece face	89	\$28.90	09-22-424	3/4" 4x8 PS Cherry Shop VC Fall Down from "A/1" Panels	33	\$56.25
06-22-444	3/4" 4x8 PS White Maple Shop MDF Fall Down from "A/1" Product	312	\$40.25				
06-36-726	1-1/4" 4x12 PS White Maple VC Shop Fall Down from "A/4" Product	14	\$226.00				
06-22-503	3/4" 4x8 R/C White Maple WPF A/1 MDF Whole Piece Face	80	\$42.25				

# MAKE US AN OFFER

**Pricing good through October 31, 2003.**

**D.R.I.V.E.™ Dedication • Resource • Inventory • Value-added • Experience**

**FOR INFORMATION, CONTACT YOUR AETNA PLYWOOD REPRESENTATIVE AT 708-343-1515  
FAX YOUR ORDERS TO (WOOD) 708-343-1616 OR (LAMINATE) 708-343-1333.**