



1401 St. Charles Road
Maywood, IL 60153

PRSR STD
U.S. POSTAGE
PAID
Permit #225
PALATINE, IL

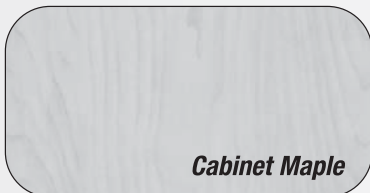
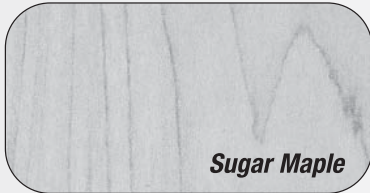
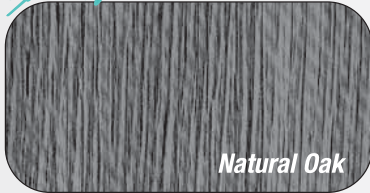


AUGUST VALUES FROM



Pricing good through 8/31/07 or while supplies last.

**Attention
1/4" RAW MDF
Customers!**



Direct Print

WE WOULD LIKE YOUR INPUT

Direct Prints are a great upgrade for your cabinet backs and drawer bottoms, either in 1/4" or 1/8" nom. thickness MDF.

Which of the 6 woodgrains listed would you offer your customers?

Let us know, we need your opinion.

Call or contact us at AetnaPlywood.com

Using our direct printing process, Flakeboard produces decorative woodgrain prints on our high quality substrates. Utilizing a unique 9 stage process and high quality printing inks, we can produce a wide range of custom woodgrain patterns to meet your specific requirements. Ideally suited for casebacks and drawer bottoms, our acrylic or UV cured topcoats provide the durability required for today's furniture and kitchen cabinet industries. Available in 4' or 5' widths, we have the flexibility to produce an optimum panel size to minimize waste. Flakeboard can also provide Cut-to-Size and Pegboard programs to suit your needs.

FUSION For your convenience, we stock three dynamic designs under our exclusive Fusion program: Cabinet Maple, Autumn Glow and Desert Glow. Fusion brings together design matches in direct print, thermally fused melamine and decorative paper overlay finishes. As well, high pressure laminate, RTF vinyl and edgband coordinates are available, providing a seamlessly designed project.

Designs depicted are subject to availability. Please contact your sales or customer service representative for standard and custom design options.

Need a Sample? Let us know, we'll get it to you ASAP!

**FOR INFORMATION, CONTACT YOUR AETNA PLYWOOD REPRESENTATIVE AT 708-343-1515
FAX YOUR ORDERS TO (WOOD) 708-343-1616 OR (LAMINATE) 708-343-1333.**

DIRECT PRINT

Aetna Plywood, your complete source for Fire-rated Duraflake Particleboard!

Basic Use: Duraflake FR is a class 1 rated fire retardant particleboard, suitable for a variety of industrial and commercial building applications where stringent building codes and public safety requirements are a factor. It can be drilled, routed, bullnosed, beveled and precision-machined. It is used as a substrate for wood veneers, high and low pressure laminates, as well as thin roll laminates. Laminated panels are then used in a wide variety of applications such as malls, offices, commercial case goods, hospitals, hotels, restaurants and any application where fire retardancy is a concern.

Composition and Materials: Duraflake FR is made from western softwood particles and highly effective fire retardant chemicals bonded with special formulas of resins and waxes.

WITH OVER 100,000 SQUARE FEET OF FR IN STOCK, AETNA'S GOT YOU COVERED.

- 1/2" 4 x 8
- 1/2" 4 x 10
- 5/8" 4 x 8
- 11/16" 4 x 8
- 11/16" 4 x 10
- 11/16" 4 x 12
- 11/16" 5 x 8
- 11/16" 5 x 10
- 11/16" 5 x 12
- 3/4" 4 x 8
- 3/4" 4 x 10
- 3/4" 4 x 12
- 3/4" 5 x 10
- 3/4" 5 x 12
- 1" 4 x 8
- 1 1/8" 4 x 8

NEW PRODUCT!

FIRE RATED THERMOFUSED MELAMINE IN-STOCK

1/2" 4 x 8 White 2 Sides
5/8" 4 x 8 White 2 Sides
3/4" 4 x 8 White 2 Sides

- UL Certified Class A
- Duraflake FR particleboard core
- Other Woodgrains, colors, patterns are available

Give us a Call for Details

Pricing good through August 31, 2007 as supplies last.

***D.R.I.V.E.*™ Dedication • Resource • Inventory • Value-added • Experience**

**FOR INFORMATION, CONTACT YOUR AETNA PLYWOOD REPRESENTATIVE AT 708-343-1515
FAX YOUR ORDERS TO (WOOD) 708-343-1616 OR (LAMINATE) 708-343-1333.**

BASSWOOD PLYWOOD

A GREAT THREE IN ONE PANEL

THIS PANEL WORKS GREAT FOR:

(1) PAINT GRADE

(2) LAMINATION

(3) STAINED OR RAW CABINETS

- The Grade is B/B - Face and Back is the same
- Color and Grain is similar to Maple or Birch

| CODE | ITEM | Unit Size | PCS | 1 Unit | 2+ Units |
|-----------|-------------------------------|-----------|------------|------------|------------|
| 09 14 515 | 1/2" 4x8 Basswood B/B VC | 60 | \$39.00 ea | \$34.00 ea | \$32.00 ea |
| 09 22 515 | 3/4" 4x8 Basswood B/B VC | 40 | \$42.75 | \$39.95 | \$37.50 |
| 09 22 516 | 3/4" 4x8 Basswood B/B Shop VC | 40 | \$36.50 | \$35.50 | \$35.00 |

* Pricing based on buying full units or all quantities available. Subject to availability

Pricing good through August 31, 2007 as supplies last.

***D.R.I.V.E.*™ Dedication • Resource • Inventory • Value-added • Experience**

**FOR INFORMATION, CONTACT YOUR AETNA PLYWOOD REPRESENTATIVE AT 708-343-1515
FAX YOUR ORDERS TO (WOOD) 708-343-1616 OR (LAMINATE) 708-343-1333.**

CHECK OUT THESE SPECIALS

PRICED TO SAVE YOU \$ MONEY \$

*** NOTE THAT THESE ARE DOMESTIC PANELS ***

| CODE | ITEM | QTY | 1-39 PCS | 40+ PCS |
|-----------|--|-----|------------|------------|
| 06 22 445 | 3/4" 4 x 8 Birch Shop Classic Core VC w/ PBC Crossbands | 16 | \$36.50 ea | \$34.25 ea |
| 06 22 608 | 3/4" 4 x 8 Birch (B/4) Shop PBC | 107 | \$22.00 | \$20.00 |
| 06 22 607 | 3/4" 4 x 8 White Birch (B/2) WPF PBC Natural Back | 22 | \$44.50 | \$42.10 |
| 06 22 610 | 3/4" 4 x 8 White Birch WPF Shop PBC | 61 | \$33.25 | \$31.50 |
| 06 22 717 | 3/4" 4 x 10 Birch (C/4) VC | 24 | \$62.00 | \$58.60 |
| 06 22 922 | 3/4" 4 x 8 P/S White Maple "A" Face PBC Vinyl Maple Back | 198 | \$51.00 | \$48.50 |
| 06 22 206 | 3/4" 4 x 8 White Maple (C/2) VC Shop UV Filled 2 Sides | 48 | \$53.70 | \$50.85 |
| 05 22 600 | 3/4" 4 x 8 R/C Red Oak "A" PBC w/ Paper Print Oak Back | 21 | \$30.50 | \$29.00 |
| 07 08 428 | 1/4" 4 x 8 P/S Walnut A/4 Shop VC | 95 | \$34.00 | \$32.00 |
| 07 22 435 | 3/4" 4 x 8 P/S Walnut A/1 Shop MDF | 27 | \$75.00 | \$71.00 |
| 09 22 454 | 3/4" 4 x 8 P/S Knotty Pine A/1 Shop MDF | 11 | \$39.00 | \$37.00 |
| 09 22 495 | 3/4" 4 x 8 P/S Mahogany A/1 Shop MDF | 27 | \$60.50 | \$57.25 |
| 05 50 319 | 3mm 32 1/2 x 80 1/2 P/S Red Oak VC | 334 | \$ 6.65 | \$ 6.25 |
| 03 12 056 | 3/8" 4 x 8 Poplar Mill Cert Ext. VC | 147 | \$ 7.25 | \$ 6.90 |

* Pricing based on buying full units or all quantities available. Subject to availability

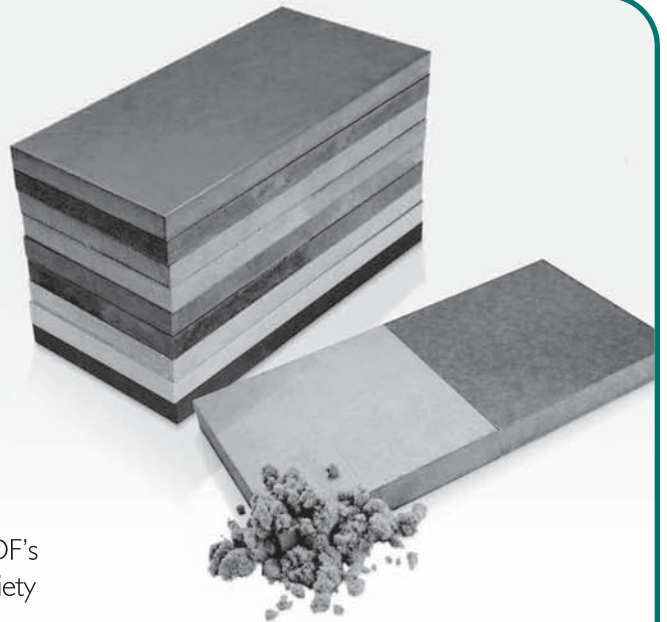
Pricing good through August 31, 2007 as supplies last.

***D.R.I.V.E.*™ Dedication • Resource • Inventory • Value-added • Experience**

**FOR INFORMATION, CONTACT YOUR AETNA PLYWOOD REPRESENTATIVE AT 708-343-1515
FAX YOUR ORDERS TO (WOOD) 708-343-1616 OR (LAMINATE) 708-343-1333.**



Any way you cut it – you retain strong, vibrant colors.



Spectratech Color MDF offers all the benefits of Great Lakes MDF's Premium products with intense "color to the core" for a wide variety of new creative possibilities.

Spectratech Color MDF offers full-depth tinting of industrial panels for furniture, store fixtures, interiors and other commercial applications. This allows for shaping and cutting of the MDF (edges can be mitered, for example) while retaining the vibrant color throughout.



Since the color is added at the start of the manufacturing process, Spectratech Color MDF retains the strength of conventional MDF panels and adds brilliant color.

Lasting beauty: specially designed light-stable colorants were chosen to minimize the effects of sunlight and UV radiation.* Spectratech Color MDF is made to be touched up and refurbished. Scratches can be sanded out and a finish re-applied.

Full-depth color eliminates the need for skin-deep finishes such as stains and laminates. When you apply a clear finish such as urethane, lacquer or clear powder coat, the colors become vivid and beautiful.

* Care should be taken to select a clear finish that will provide protection from these elements.



Available colors:



In response to customer requests, we've added a new color to our lineup: an attractive warm grey

UV-WOOD IN STOCK

Pre-finished to give you a big head start.

UV WOOD is pre-finished with acrylate epoxy and cured with ultraviolet lights. This saves you valuable time and money, and eliminates exposure to harmful VOC emissions. And because it's pre-finished, UV WOOD is perfect for any application in which a clear, durable finish is required, such as:

- Cabinets
- End panels
- Vanities
- Shelving
- Case goods
- Drawer parts

Aetna now offers UV WOOD in virtually any combination of specie, grade and core. We currently stock UV WOOD in medium gloss, 48-1/2" x 96-1/2" oversize.

**Special Pricing
for August only**

Unit size is 36 pieces for all items.

| CODE | Size | Item | UV Sides | Unit Size | 20+ | Full Units |
|-----------|------------------|------------------------|------------|-----------|-------------|-------------|
| 06 08 216 | 1/4" 48.5 x 96.5 | R/C White Maple C/4 VC | UV 1 Side | 100 | \$28.00 ea. | \$26.85 ea. |
| 06 14 210 | 1/2" 48.5 x 96.5 | R/C White Maple C/2 VC | UV 1 Side | 60 | \$44.25 | \$42.90 |
| 06 14 212 | 1/2" 48.5 x 96.5 | R/C White Maple C/2 VC | UV 2 Sides | 60 | \$48.15 | \$46.75 |
| 06 22 210 | 3/4" 48.5 x 96.5 | R/C White Maple C/2 VC | UV 1 Side | 40 | \$51.25 | \$49.50 |
| 06 22 212 | 3/4" 48.5 x 96.5 | R/C White Maple C/2 VC | UV 2 Sides | 40 | \$54.75 | \$53.10 |

* Note — all faces are 100% SAP (White) Maple

- Edge Banding is available in 5/8" & 7/8" widths

NEED TO SAVE MORE \$ YET? Try Pre-finished Import Birch

- Same quality UV - Finish (Domestic)
- Domestic Birch "Thick Faces" on an import core

| CODE | Size | Item | UV Sides | 20+ | 50+ |
|-----------|------------|------------------------|-----------|-------------|-------------|
| 06 22 271 | 3/4" 4 x 8 | R/C White Birch C/3 VC | UV 1 Side | \$39.60 ea. | \$37.25 ea. |

HOW ABOUT EVEN MORE SAVINGS? Pre-finished Birch from China

| CODE | Size | Item | UV Sides | Unit Size | 20+ | 40+ |
|-----------|------------|----------------------------|------------|-----------|-------------|-------------|
| 06 22 278 | 18mm 4 x 8 | R/C White Birch C/2 WPF VC | UV 1 Side | 40 | \$37.80 ea. | \$35.25 ea. |
| 06 22 279 | 18mm 4 x 8 | R/C White Birch C/2 WPF VC | UV 2 Sides | 40 | \$41.00 | \$39.00 |

Pricing and availability subject to change without notice.

Pricing good through August 31, 2007 as supplies last.

D.R.I.V.E.™ *Dedication • Resource • Inventory • Value-added • Experience*

**FOR INFORMATION, CONTACT YOUR AETNA PLYWOOD REPRESENTATIVE AT 708-343-1515
FAX YOUR ORDERS TO (WOOD) 708-343-1616 OR (LAMINATE) 708-343-1333.**

We fulfill the function.
You create the form.

passion
for panels®

The most recognized and specified non-structural FR panel, Flakeboard's Duraflake FR and its companion, Premier FR let you streamline your designs by offering a wide range of sizes, exceptional strength, smooth finishing surfaces and excellent workability. Whether you cut, drill, bevel or rout them, Duraflake FR and Premier FR maintain their fire rating.

Made of 100% recovered and recycled wood, Duraflake FR and Premier FR may also be applied toward LEED credits.

Call us at 1.800.268.9830 to request a sample.
For detailed specification sheets, visit www.flakeboard.com

Duraflake® FR | particleboard
Premier® FR | MDF ·

Office buildings, schools, restaurants,
elevators. Public spaces vary widely
in size – so do our fire-rated panels.

