



1401 St. Charles Road
Maywood, IL 60153

PRSR STD
U.S. POSTAGE
PAID
Permit #225
PALATINE, IL



JANUARY VALUES FROM



AETNA
PLYWOOD

Pricing good through 1/29/10 or while supplies last.

AETNA HELPFULL HINTS

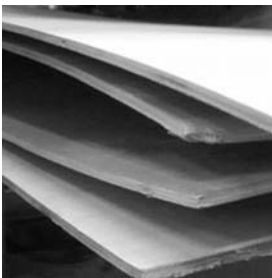
A change in the weather



Wood is a "hygroscopic" material. Simply put, that means it freely gives off or takes on water as conditions around it change. Both wood and air have some amount of water in them. Water tends to move quite freely from the "wetter" of the two to the "drier." Water in air is expressed as humidity, but because the amount of water air can hold varies with the temperature of the air, the percentage of water in the air at a given temperature is called relative humidity.

During extremely cold weather, air in the workplace or in a home or office is heated to a comfortable level. This increases the amount of water the air can hold, but unless moisture is simultaneously added does not change the amount of water actually in the air, thus decreasing the relative humidity. When relative humidity drops below 25% at a room temperature of 65 degrees F or higher, the air will seek moisture from other sources, and the most common source is, you guessed it, wood!

Warping

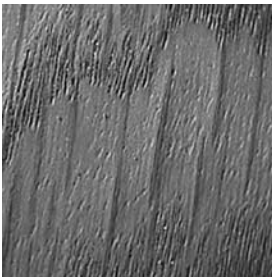


Warp is any deviation from a flat plane. In a hardwood plywood panel or component, that means that one or more corners of the panel or part will not touch a flat surface. Cupping (across the grain), bowing (parallel to the grain), and twisting (spiral to the grain) are all reported. In fabrication, this is usually observed as the panels are being sawn to component size. In the home or office, it is usually observed in free attached components such as doors or shelves.

The primary cause for warp is the dimensional change that takes place when wood gives off water as would be expected during the coldest, driest parts of the year when heating inside air is more likely. This is aggravated by the fact that wood gives off surface moisture first, thus leaving a mild to severe imbalance of moisture in the panel. Add to this the fact that one side of the panel or component is typically more protected than the other when panels are stacked with the face up or doors are mounted

with one side facing the room and the other facing the inside of the cabinet.

Checking



Checks, also called splits or cracks, occur when dimensional change as a result of moisture movement described above creates stresses beyond the resistance capacity of the wood in question.

Checks usually occur parallel to the grain in species like maple or birch because this is where their weakest resistance to stress exists. Movement that takes place in the substrate directly under the face will not normally manifest itself by checking across the grain of the face, but in the case of highly ring porous woods like red oak or even ash, the checks may develop across the weaker areas of early growth (the coarse textured wood).

What to do

Ok, so how do we avoid warping and checking? There are many things that can be done, but the most important are:

Ensure proper gluing instructions are followed

- Avoid lengthy warehouse time at the manufacturing facility
- Avoid lengthy delivery times
- Store wood in climate controlled warehouses at the distribution level and fabricator site
- Allow panels to acclimate to any new environment prior to processing
- Where possible, stack components face to face on uniform thickness pallets or runners and weight the stacks down with a reasonable weight between processes
- Maintain operating conditions between 30 and 60% relative humidity and 65 degrees to 75 degrees F in production and service
- Avoid installing any finished product on site until the heating and cooling systems are up and running, and even then allow the panels or finished goods to acclimate to the new environment before installing
- Seal all surfaces equally
- Allow for linear expansion in the design of the finished product - avoid nailing, screwing, or gluing panels in place wherever feasible, opting for free hanging installation utilizing "Z" clip hangers or equivalent, especially on thicker panels.
- Make sure any drywall, mortar, concrete, or plaster surfaces are completely dry and sealed before installing panels, cabinets, or fixtures

Unfortunately, given the number of variables involved, even the above outlined precautions cannot guarantee against all warping and checking. However, having an understanding around the natural movement of water into and out of wood, coupled with these precautions will greatly minimize the potential for either.

AETNA + 60" S™ = \$SAVINGS



SAVINGS

Introducing the 60"s™ a line of 60-inch-wide hardwood plywood from Aetna Plywood. These five-foot-wide panels can dramatically improve yield and reduce labor costs...which just happens to help improve profits. In fact, they're the ideal option for manufacturers looking to lower raw material and labor costs, as well as reduce waste. Of course, having greater yield doesn't

mean much without quality. And the veneer used in the face are of superior quality. They're available with either particleboard or MDF cores and manufactured using state-of-the-art technology. Plus, they're available with most major rotary and plain sliced veneers, as well as paper backing, for options that make them perfect for almost any project.

IN STOCK AT AETNA TODAY

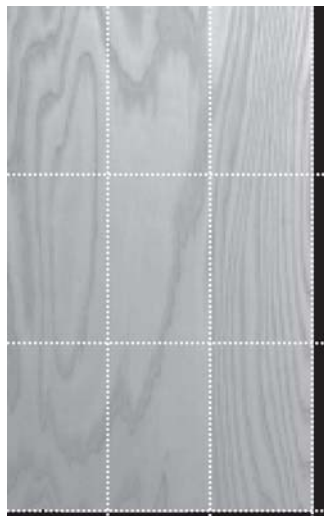
CODE	ITEM	PRICE	1 - 5	6 +
05-22-580	3/4" 5 x 8 PS Red Oak A/1 MDF SM&N		\$89.00 ea.	\$83.50 ea.
06-22-580	3/4" 5 x 8 PS White Maple A/1 MDF SM&N		\$88.00	\$82.50
07-22-580	3/4" 5 x 8 PS Walnut A/1 MDF SM&N		\$103.00	\$96.70
09-22-580	3/4" 5 x 8 PS Cherry A/1 MDF SM&N		\$90.00	\$85.00
09-22-581	3/4" 5 x 8 PS Khaya A/1 MDF SM&N		\$95.15	\$89.50

ALL PANELS ARE 1/2" OVERSIZE

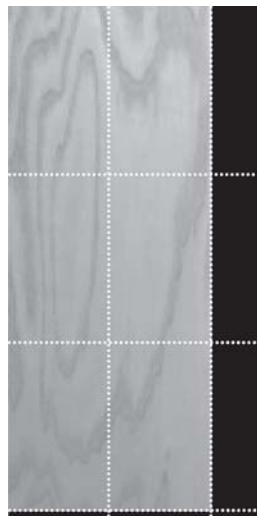
60's PRODUCE BETTER YIELDS

This illustration is an example of increased yields for a 19-1/4" x 31-5/8" component utilizing a 5' x 8' panel. If 1,700 pieces were required, 284 four-foot panels would be used vs. 189 five-foot panels.

That's 95 fewer panels to handle with a 16% improvement in yield.



New 95% yield 5' x 8' Panel



Standard 79% yield 4' x 8' Panel

Features & Benefits

- * Better yield per panel for reduced waste and improved profits
- * Multiple core and veneer choices to fit a variety of applications
- * Large production volume for availability and quick delivery
- * Small unit quantities available so you only purchase what's needed
- * Available in a variety of hardwood face and back combinations, including paper backing

Pricing good through January 29, 2010 as supplies last.

D.R.I.V.E.™ Dedication • Resource • Inventory • Value-added • Experience

**FOR INFORMATION, CONTACT YOUR AETNA PLYWOOD REPRESENTATIVE AT 708-343-1515
FAX YOUR ORDERS TO (WOOD) 708-343-1616 OR (LAMINATE) 708-343-1333.**

YOU SHOULD BE LOOKING AT OUR RADIATTA PINE PLYWOOD

CODE	ITEM	PLYS	UNIT SIZE	PCS	1 UNIT	2+ UNITS
03 08 463	7/32" 4 x 8 AC	3	146	\$15.00 ea.	\$14.10 ea.	\$13.60 ea.
03 12 469	11/32" 4 x 8 AC	4	108	\$14.60	\$13.70	\$13.25
03 14 463	15/32" 4 x 8 AC	5	80	\$18.75	\$17.65	\$17.00
03 18 463	19/32" 4 x 8 AC	5	65	\$22.90	\$21.50	\$20.25
03 22 463	23/32" 4 x 8 AC	7	54	\$27.50	\$25.80	\$24.90

A face: 6 or less wood patches (clear, no patch faces). Sanded with 150 grit paper.
C back: small amount open defects allowed. Sanded with 120 grit paper.

- Phenolic Glue
- Radiata Pine grain does not telegraph
- Very tight edges
- +/- .4mm (1/64) thickness tolerance
- TECO certified
- Well sanded, no torn grain
- Stays Flat
- Cuts easily without splintering
- Very few core voids and splice gaps
- Uniform color

BLOWING OUT REMAINING INVENTORY OF BC PANELS

CODE	ITEM	PLYS	IN STOCK	CLEANOUT PRICE
03 12 460	11/32" 4 x 8 BC	3	45	\$14.00 ea.
03 14 460	15/32" 4 x 8 BC	5	74	\$17.00
03 22 580	23/32" 5 x 8 BC	7	9	\$47.00

Pricing good through January 29, 2010 as supplies last.

***D.R.I.V.E.*™ Dedication • Resource • Inventory • Value-added • Experience**

**FOR INFORMATION, CONTACT YOUR AETNA PLYWOOD REPRESENTATIVE AT 708-343-1515
FAX YOUR ORDERS TO (WOOD) 708-343-1616 OR (LAMINATE) 708-343-1333.**

COMMITTED TO COUNTERTOPS

Aetna Plywood has always stocked an extensive inventory of countertop board for our customers. Why limit our customers to just a few sizes? We believe in giving our customers options! The right Size for the job!

DURAFLAKE® COUNTERTOP STOCK

The particleboard that offers the most versatility!!!

Manufactured predominantly with Douglas Fir, a material that promotes strength and stability, these non-structural, interior panels are engineered for applications such as, but not limited to: cabinets, shelving, fixtures and displays, furniture and door components.



3/4" 25 x 97	3/4" 25 x 121	3/4" 25 x 145
3/4" 26 x 97	3/4" 26 x 121	3/4" 26 x 145
3/4" 30-1/2 x 97	3/4" 30-1/2 x 121	3/4" 30-1/2 x 145
1-1/8" 30-1/2 x 97	1-1/8" 30-1/2 x 121	1-1/8" 37 x 145
1-1/8" 37 x 97	1-1/8" 37 x 121	

15/16" 49 x 97 Particleboard

15/16" 49 x 97 MDF

Great for Solid Surface Buildup

Also:

3/4" 30-1/2 x 121 Moisture Resistant Particleboard

3/4" 25 x 145 Moisture Resistant Particleboard

VINYL

Aetna has stocked Vinyl laminated particleboard for many years, but what may be old to us may be new to somebody else.

Product features:

- Provides a finished look for cabinet interiors
- Complements Hard Rock Maple thermofused melamine
- The price is right!

Stocked in the following:

1/4" 4 x 8 Hard Rock Maple 1 side on MDF core

5/8" 4 x 8 Hard Rock Maple 2 sides on PB core

1/2" 4 x 8 Hard Rock Maple 2 sides on PB core

3/4" 4 x 8 Hard Rock Maple 1 side/raw back on PB core

5/8" 4 x 8 Hard Rock Maple 1 side/raw back on PB core

3/4" 4 x 8 Hard Rock Maple 2 sides on PB core

Edgebanding to match is also available!

D.R.I.V.E.™ *Dedication • Resource • Inventory • Value-added • Experience*

FOR INFORMATION, CONTACT YOUR AETNA PLYWOOD REPRESENTATIVE AT 708-343-1515

FAX YOUR ORDERS TO (WOOD) 708-343-1616 OR (LAMINATE) 708-343-1333.



You invested in your design

passion
for panels®

We invested in its future

Introducing the most extensive line of MDF and particleboard with no added urea-formaldehyde resin.

- Qualifies for up to 6 LEED Points
- CARB Phase 1 Certified
- FSC Certified*
- EPP Certified
- Unparalleled collection of melamine design options!

 **Flakeboard**

VESTA | no added urea-formaldehyde resin panels

For more information, please contact us at 1.800.268.9830 or www.flakeboard.com

*FSC certification applies to Bennettsville, SC MDF plant

WF 205 Teresina TFM



The mark of responsible forestry
SW-COC-000444
© 1996 FSC



VESTA | no added urea-formaldehyde resin particleboard



VESTA | no added urea-formaldehyde resin particleboard

THE NO ADDED UREA-FORMALDEHYDE RESIN OPTION

VESTA is a specialty particleboard panel produced using a no added urea-formaldehyde resin process and 100% recycled and/or recovered (pre-consumer) wood material.

This EPP (Environmentally Preferable Product) certified, M-2 particleboard qualifies for no added U-F resin project requirements and may contribute to LEED points.

Available raw or TFM finished, it's the perfect choice for VESTA specified cabinets, countertops, fixtures and furniture products.

VESTA Particleboard Specification (St. Stephen, NB; Albany, OR; Bennettsville, SC)

Grade	VESTA Particleboard
Thickness (in)*	3/8 - 1 1/8**
Specification	ANSI M-2***
Density (pcf)	41-42 St. Stephen, 45-47 Albany, 42-44 Bennettsville
MOR (psi)	1,885
MOE (psi)	290,100
Internal Bond (psi)	58
Face Screw Hold (lb)	202
Edge Screw Hold (lb)	180
Linear Expansion (%)	0.40
Thickness Tolerance (in)	+/- .005
Length and Width (in)	+/- 1/16
Squareness (in)	+/- 1/8

* Metric thickness available. The above properties are based on averages of normal production. Testing for conformance to the above specifications must be done in accordance with procedures in the American National Standard for Particleboard (ANSI A208.1-2009-).

** Please contact your Sales Representative for thickness standards and availability.

*** M-3 Grade available upon request.

Flakeboard particleboard is manufactured to strict quality control standards with recycled and recovered wood fiber. These products may contribute towards specific credits under the US Green Building Council (USGBC) Leadership in Energy & Environmental Design (LEED) criteria.

Information for Qualifying LEED Credits

LEED Category ¹	Possible Points/Credits	Intent
MR 4.1 Recycled Content: 10% (post + 1/2 pre-consumer) ²	1 point	Increase the use of building products that contain recycled content material
MR 4.2 Recycled Content: 20% (post + 1/2 pre-consumer) ²	1 point added to 4.1	Increase the use of building products that contain recycled content material
MR 5.1 Regional Materials: 10% Extracted, Processed & Manufactured Regionally ³	1 point	Increase the use of building products that are extracted and manufactured within the project region
MR 5.2 Regional Materials: 20% Extracted, Processed & Manufactured Regionally ³	1 point added to 5.1	Increase the use of building products that are extracted and manufactured within the project region
IEQ 4.4 Low-emitting Materials: Composite Wood & Agrifiber Products	1 point	Reduce indoor air contaminants and improve indoor air quality

¹ Source: LEED Green Building Rating System for New Construction & Major Renovations, Version 2.2. For additional LEED information, visit www.usgbc.org.

² EPP Certified. For additional EPP information, visit www.pbmdf.com

³ Plant Locations: St. Stephen, NB; Albany, OR; Bennettsville, SC

- Complies with CPA EPPS 3-08 and CCR 93120.2(a) (CARB Composite Wood ATCM Phase 1 Formaldehyde Emission Limits)
- Material Safety Data Sheets are available upon request
- All panels are approved for use in interior, non-structural applications
- Contains 100% Recycled/Recovered Wood Content
- Conforms to formaldehyde emission requirements for particleboard in ANSI A208.1-2009 Table B and HUD 24 CFR Part 3280



CPA-3-08 Specification
California ARB Approved
Third Party Certifier TPC-1



www.flakeboard.com 1.800.268.9830

STOCK LUMBER ITEMS

White Ash	4/4	5/4	6/4	8/4		
White Pine <i>Northern Knotty and Clear</i>	4/4	5/4	6/4	8/4		
Poplar	4/4	5/4	6/4	8/4	10/4	12/4
Hickory <i>Calico, Brown and White</i>	4/4					
Red Oak <i>Rift and Quarter Sawn</i>	4/4	5/4	6/4	8/4	10/4	
Hard White Maple <i>1 & 2 White, #1 common and Unselected Natural</i>	4/4	5/4	6/4	8/4	10/4	12/4
American Walnut	4/4	5/4	6/4	8/4	10/4	
Mahogany	4/4	5/4	6/4	8/4	10/4	12/4
Khaya and Sapele						
American Cherry	4/4	5/4	6/4	8/4	10/4	
White Paper Birch	4/4					
Yellow Birch	4/4	5/4				
White Oak <i>Rift and Quarter Sawn</i>	4/4	5/4		8/4		
Soft White Maple	4/4	5/4	6/4	8/4	10/4	
Western Red Alder <i>Rustic Grade and Superior Clear</i>	4/4	5/4	6/4	8/4	SFI Certified	

*** Also In-Stock ***

25/32" x 1-3/4" S4S Birch,
Cherry, Alder, Soft Maple

FSC Certified Lumber also Available

Machining Capabilities

Surfacing

Straight Line Ripping

Ripped 2 edge → **Great for Edge Gluing**

Specializing in

- FAS & Select Grades
- #1 Common Also Available

Softwood Dimensional Stock - 1 x 4, 2 x 4 #2 and Economy Grade

Don't See Something You Need? — Call Us!

D.R.I.V.E.™ Dedication • Resource • Inventory • Value-added • Experience

FOR INFORMATION, CONTACT YOUR AETNA PLYWOOD REPRESENTATIVE AT 708-343-1515

FAX YOUR ORDERS TO (WOOD) 708-343-1616 OR (LAMINATE) 708-343-1333.

WILSONART METALAMINATES

“Looks that kill—Prices that won’t”

- All the styles of decorative metal, but the flexibility of HPL. Aluminum foil thermally fused to the phenolic backer.
- Perfect for postforming or flat work.
- **No up-charge for the phenolic backer.**
- Protective Film on all sheets.

WOW!

	Quantity	1-9	10+
Brushed Natural (#6429) or Brushed Gold (#6430)		\$ 3.67 sf	\$ 3.39 sf
Polished Natural (#6417)		6.13	5.79
Polished Gold (#6415)		6.50	6.19

WOW!

WILSONART WOOD ASSEMBLY GLUE

WA20 is a high strength, fast-setting yellow PVA designed for wood to wood applications & for cold press panels. It has both high heat and solvent resistance. Compare to Titebond® Original for great results, at much lower prices.

	Wilsonart WA 20	Titebond® Original
Solids Content	47% ± 2%	46%
Open Time	5 minutes	5 minutes
Bond Strength		
Room Temp	3600 psi – 77% wood failure	3600 psi – 77% wood failure
150° F overnight (ASTM 905)	1600 psi – 10% wood failure	1600 psi – 10% wood failure

Gallons \$13.99 or Five-gallon pails \$59.99

POLYBAK — RESIN BACKERS

Polybak’s proprietary resin system is formulated to give you a high-quality backer that performs similarly to expensive phenolic backers—but with **BIG SAVINGS**. Polybak is **MUCH TOUGHER** than cheap economy backers made only with kraft paper. Polybak is a **DURABLE RESIN IMPREGNATED BACKER** used by HON, Herman Miller, and Kimball Furniture because of its **high performance, flexibility, water resistance, and ease-of-use.**

9 SIZES —> NOW IN STOCK

**Tough & Flexible .024" thick, Tear-Resistant
100 pieces only \$199/M**

Pricing good through January 29, 2010 as supplies last.

***D.R.I.V.E.*™ Dedication • Resource • Inventory • Value-added • Experience**

FOR INFORMATION, CONTACT YOUR AETNA PLYWOOD REPRESENTATIVE AT 708-343-1515

FAX YOUR ORDERS TO (WOOD) 708-343-1616 OR (LAMINATE) 708-343-1333.

Wilsonart Laminates

Aetna Plywood's "Everyday Low Prices"

Special Value #1 — Commodity Value H.P.L.

No Minimum Order. 1 sheet or 1000, they all qualify

Automatically Discounted Prices

"Mix & Match" for your Lowest Prices

10 sizes available — Standard Grade & Vertical Grade

First Quality from our regular stock. No "seconds"

	Vertical Grade	Standard Grade
1-20 sheets	\$.70 psf	\$.81 psf
21-99	.67	.77
100+	.64	.73

Look at these Top Selling Colors at "Everyday Low Prices"



Wilsonart Woodgrains Include

Fusion Maple
Kensington Maple
Manitoba Maple

Wild Cherry
Natural Pear
Limber Maple

Solar Oak
Bannister Oak
Golden Oak

Wilsonart Solid Colors

Designer White
Fashion Grey
Natural Almond
Light Beige

Frosty White
North Sea
Khaki Brown
Wallaby

Antique White
Slate Grey
Pepperdust
Dove Grey

Black
Haze
Grey
Beige

Wilsonart Patterns Include

White Nebula
Grey Glace

Grey Nebula
Neutral Glace

Beige Nebula

Special Value #2 — Basic Liner/Laminate

# 3173 (1573 Match)	400 piece crate	26¢ p.s.f.
# 3195 (1595 Match)	100-399	29¢ p.s.f.
# 3154 (D354 Match)	50-99	31¢ p.s.f.
# 3130 (D30 Match)	25-49	36¢ p.s.f.
# 3181 (D381 Match)	10-24	43¢ p.s.f.

Pricing good through January 29, 2010 as supplies last.

D.R.I.V.E.™ Dedication • Resource • Inventory • Value-added • Experience

FOR INFORMATION, CONTACT YOUR AETNA PLYWOOD REPRESENTATIVE AT 708-343-1515

FAX YOUR ORDERS TO (WOOD) 708-343-1616 OR (LAMINATE) 708-343-1333.