

ARAUCOPLY®

100% Radiata Pine

Pinus Radiata



AraucoPly Sanded Panels & US PS1-09 Product Standard

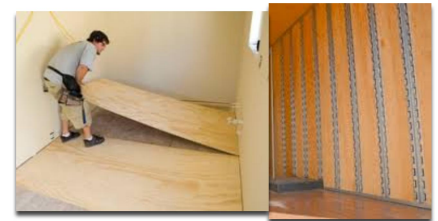
- Ensures end users that stamped products meet min uniform grade requirements.
- APA, TECO, TPI all certify their member mills stamped panels conform to PS1
- Arauco internal grades meet or exceed PS1 standards
- PS1 certified by Timper Products Inspection (TPI)

AC Exterior Sanded1

- 50/120 grit sanding
- Composed Core
 - 1/4" & 11/32" - 3ply
 - 15/32" & 19/32" - 5ply
 - 23/32" - 7ply, 31/32" - 9ply
- 6 or fewer wood patches per face
- 6 or fewer syn repairs per face
- PS1 Underlayment stamped

Applications

- casework, DIY projects, soffits, trailer liner, underlayment, radiant floor heating, etc...



AETNA PLYWOOD, INC. CORPORATE	AETNA PLYWOOD, INC. ROCKFORD	AETNA PLYWOOD, INC. INDIANAPOLIS	AETNA PLYWOOD, INC. MINNESOTA	HORN LUMBER CICERO
1401 St. Charles Road Maywood, IL 60153 PH: 708.343.1515 Fax: 708.343.1616	2112 12th Street Rockford, IL 61104 PH: 815.968.0921 Fax: 815.968.4720	6350 Brookville Road Indianapolis, IN 46219 PH: 317.353.6281 Fax: 317.356.3503	4250 Otter Lake Road White Bear Lake, MN 55110 PH: 651.407.2800 Fax: 651.407.2801	4700 W 19th Street Cicero, IL 60804 PH: 773.847.7397 Fax: 773.847.7798



BC Exterior Sanded

- 150/120 grit sanding
- Composed Core
 - 1/4" & 11/32" - 3ply
 - 15/32" & 19/32" - 5ply
 - 23/32" - 7ply, 31/32" - 9ply
- Unlimited wood patches
- 8 or fewer syn repairs per face
- PS1 Underlayment stamped
- Not span rated

Applications

- paint grade, soffits, van liner, underlayment, handi panels

CP/C Exterior Sanded

- Solid Repaired C face
- 150/100 grit sanding
- Composed Core
 - 1/4" & 11/32" - 3ply
 - 15/32" & 19/32" - 5ply
 - 23/32" - 7ply, 31/32" - 9ply
- Large solid knots & syn repairs
- Not span rated

Item	Description	Unit Size	Per Piece	1 Unit	2+ Units
04-22-442	18mm 48x96 Radiata Pine CP/C	54	\$29.95	\$28.50	\$27.90
04-14-442	18mm 48x96 Radiata Pine CP/C	80	#23.00	\$21.99	\$21.50

Pricing is good through May 29, 2020

AETNA PLYWOOD, INC. CORPORATE 1401 St. Charles Road Maywood, IL 60153 PH: 708.343.1515 Fax: 708.343.1616	AETNA PLYWOOD, INC. ROCKFORD 2112 12th Street Rockford, IL 61104 PH: 815.968.0921 Fax: 815.968.4720	AETNA PLYWOOD, INC. INDIANAPOLIS 6350 Brookville Road Indianapolis, IN 46219 PH: 317.353.6281 Fax: 317.356.3503	AETNA PLYWOOD, INC. MINNESOTA 4250 Otter Lake Road White Bear Lake, MN 55110 PH: 651.407.2800 Fax: 651.407.2801	HORN LUMBER CICERO 4700 W 19th Street Cicero, IL 60804 PH: 773.847.7397 Fax: 773.847.7798
---	--	--	--	--