

SPRING, 2021

Home Sweet Aetna!

MATERIALS FOR RESIDENTIAL



AETNA

BUILDING SOLUTIONS

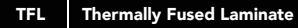
We Have What It Takes

There's no place like where we live. It's where families bond, friends gather, and memories are made. Whether it's a home, apartment, or condo, every living space should be a safe and welcoming environment, packed with personality and materials that endure.

Whether your vision is traditional or contemporary, subtle or bold, in the suburbs or city, there's a reason Aetna is a household name.



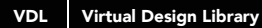
Increase functionality with specialty laminates – RE-COVER™ for updating, High Wear for extra durability, or Fire-Rated for code compliance.



Cost-effective solution for low-touch applications.



Easy to repair, refinish, or replace.



Evolving online library with virtually unlimited High Pressure Laminate designs. Allows for expressive designs.





TPT THINSCAPE™ Performance

Versatile, highly durable, ultra-thin countertops.

Extremely impact-, scratch-, and moisture-resistant.

European-inspired slim design – an affordable alternative to natural stone.

Available in 12 patterns with coordinating core colors.



DM Decorative Metals

Pure metal surfaces that are adaptable and virtually unbreakable.

Ideal for vertical applications.

Blends industrial flair with striking, adaptable design.

Adds character accents and drama in a space.



QTZ Quartz

Offers a rich and welcoming appearance.

Non-porous surface that's stain- and scratch-resistant.

Tough, durable, and doesn't require sealing, for lower maintenance and longer life.



BS Backsplash

Completely seamless and smooth-to-the-touch, Wilsonart® Backsplash makes it easier than ever to clean up spills and splashes!

A quick, easy-to-install and affordable alternative to traditional tiles.



PE Premier Eurocase

Premier Eurocase's Reflekt and UltraMatte panels consist of a PureCore® premium quality medium density fiberboard (MDF) substrate with a co-extruded polymer acrylic top layer. Reflekt and UltraMatte panels are well suited for interior vertical surfaces such as kitchen cabinets, vanities, closets, furniture, store fixtures and displays, as well as wall panels.



BB John Boos Butcher Block Tops

John Boos are experts in handcrafting American Hardwoods into quality products of beauty, durability and function. North American Hard Rock Maple is the core species of the Boos Block legacy and is also one of the most durable and sought after food preparation surfaces.



WW Wetwall

The ultimate waterproof surface

Wetwall is the ultimate surface for when water is ever-present. Instead of tile and grout, Wetwall uses a single panel that's water-proof. Stylish. Simple to install. And ready for everything.



HWS Salice Hardware

A complete product line of concealed hinges, drawer slides and sliding door systems has made Salice the technology leader of the market, a never ending task requiring solid engineering and innovative mentality. Salice combines the technological and industrial edge with a complete, prompt and efficient order processing system to streamline order fulfillment.



HWV Vauth Sagel Hardware

Hygiene, environmental awareness and sustainability play a special role in the kitchen – especially in waste disposal. Vauth Sagel specializes in storage solutions which maintain both – the cleanliness of the kitchen and a flexible separation.

Kitchens are the heartbeat of the home. This wasn't always the case, but today, open concepts are being built around this setting – and it's where materials were born to shine.

HPL High Pressure Laminate

A variety of finishes and textures provide creative options.

QTZ Quartz

For high-touch applications, this material makes a pure and purposeful statement.

VDL Virtual Design Library

Our library allows for virtually unlimited designs.

SS Solid Surface

Easy to clean and maintain. Beautiful color-through design.

HWS Salice

A complete product line of concealed hinges, drawer slides and sliding door systems.

BB John Boos Butcher Block

Experts in handcrafting American Hardwoods into quality products.

HL Hardwood Lumber

Beautiful, sustainable, functional... and more popular than ever, in stock and ready for delivery.



A dash of inspiration.

Countertops

Wilsonart® HD® and Premium Laminates feature AEON™ Enhanced Scratch & Scuff-Resistant Performance Technology, for a surface that looks newer and performs better, longer.

UP TO
5X
SCUFF & SCRATCH
RESISTANCE*

UP TO
3X
WEAR
RESISTANCE*



DRAMA MARBLE 5010K-07 HPL VINTAGE CHEVRON Y0576 VDL

Multi-level Island

Pull up a stool and enjoy our elegant Quartz – a tough, upscale surface that resists stains and can be used for generations.



CALACATTA VOLEGNO Q4057 QTZ



CALCUTTA BLANC T5501 TPT WHITE 1570 HPL

Cooking Area

Mix in some style with THINSCAPE™ Performance Tops. Available in 12 inspired designs, this versatile material mimics the look of natural stone and makes every meal a masterpiece.

At home, we have things to organize, clothes to wash, and showers to take. With a mix of durable, interesting materials, we make every chore more inspiring and every morning less routine.

TFL Thermally Fused Laminate

For low-touch surfaces, like vertical applications, Thermally Fused Laminate coordinates beautifully and is very budget-friendly.

HPL High Pressure Laminate

Available in over 300 designs and 16 finishes, our High Pressure Laminate is incredibly versatile and finds a home all over the house.

CS Coordinated Surfaces

Why settle for close enough? We provide an easy-to-spec combination of High Pressure Laminate, Thermally Fused Laminate Panels, and Edgeband, perfect for coordinating shelving, drawers, and more.

HWV Vauth Sagel

Hygiene, and sustainability play a special role. Vauth Sagel specializes in storage solutions which maintain both.

HL Hardwood Lumber

Beautiful...sustainable...functional. And more popular than ever. At Aetna Building Solutions, you'll find more of today's most popular species, grades and thicknesses, in stock and ready for delivery.



Maximize the morning routine.

Master Bathroom

Build the bathroom of your dreams using a versatile, simple-to-care-for material like Wilsonart Solid Surface. It's seamless, smooth, and non-porous, meaning moisture won't become a problem near sinks or tubs.



Bathroom Counter

When there's water, soap, and cosmetics, you need a material that stands out with design and stands up to moisture – like Wilsonart's broad collection of Quartz.



Half Bathroom

Even half baths deserve to shine. We make it possible with Wilsonart High Pressure Laminate that visitors will rave about.

Wetwall is the ultimate surface for when water is ever-present. Instead of tile and grout, Wetwall uses a single panel that's water-proof. Stylish. Simple to install. And ready for everything.

WW Wetwall

With a stylish collection of on-trend and in-demand designs, the Wetwall Water-Proof Wall Panel System withstands everyday use thanks to its patented water-proof solution. It's also unbelievably easy to work with. Wetwall can be installed without any special tooling in as little as 2.5 hours. Once it's in, it's dependable and requires little effort. Because it's grout-free, it's simple to maintain and clean.

Wetwall is engineered for easy installation, lasting beauty, and low cost of ownership. Consider the benefits:

- Trend-aware designs coordinate well with popular bath finishes and materials.
 - Patented, water-proof wall panel system withstands everyday use.
 - With simple tongue-and-groove installation, the average time to install is as little as 2.5 hours.
 - Grout-free surface wipes clean with soap and a damp cloth for lasting beauty and easy maintenance.
 - On-time delivery and reliable service you can count on.
- ...All available today, through Aetna Building Systems.



Create the perfect bathroom space.

Countertops

THINSCAPE® performance tops revolutionize the countertop. An engineered composite that provides impact, scratch, and moisture resistance, offering next-level durability and performance. Modern. Ultra-thin. Sleek. And oh so smart.

Wilsonart.com/thinscape.



Durable, Beautiful Surfaces

QUARTZ offers a rich and welcoming appearance. Non-porous surface that's stain- and scratch-resistant. Tough, durable, and doesn't require sealing, for lower maintenance and longer life.



Hardware Solutions

The Salice range of space optimization products provides elegant and highly desirable enhancements to everything that kitchens and bathrooms are used for, with an almost infinite variety of hardware solutions that can be customized to suit your own individual taste and needs.

Materials can take many shapes and forms. The desk of a home office. The shelving of a display. They make the home more welcoming and more practical, today and for years to come.

HPL High Pressure Laminate

Durable, beautiful, and moisture-resistant. Ideal for high-impact spaces, including utility areas like laundry and mud rooms.

TFL Thermally Fused Laminate

Available in over 230 designs and 9 finishes, this cost-effective solution excels in low-touch applications across the living environment.

SS Solid Surface

With this easy-to-maintain surface, you can worry less about spills and smudges and focus on enjoying life.

PE Premier Eurocase

Premier Eurocase’s Reflekt and UltraMatte panels of premium medium density fiberboard (MDF) are ideal for home office work surfaces.

HWS Salice

A complete product line of concealed hinges, drawer slides and sliding door systems.

BB Butcher Block

Experts in handcrafting American Hardwoods into quality products.



Made for real life.

Laundry Room

Wash, dry, and walk away inspired. Our surfaces enhance the look and functionality of laundry rooms—from durable, easy-to-clean Quartz countertops to woodgrain doors made from Thermally Fused Laminate, conveniently available through our 5-piece Door Program.



The Wilsonart® 5-Piece Door Program offers made-to-order doors and drawer fronts. Achieve your design vision with 17 inventoried designs across multiple surface types – seamlessly coordinated and ready to install.

wilsonart.com/cabinet-doors



Mudroom

When the outside comes inside, you need durability and impact resistance. Achieve them both with a combination of High Pressure Laminate surfaces and THINSCAPE™ Performance Tops.



Garage Organizer

Organize everything – from tools to sports gear – without worrying about wear and tear. Durable High Pressure Laminate cabinets and versatile THINSCAPE™ Performance Tops provide an enduring solution.

Swing by our place anytime.

Visit wilsonart.com and discover thousands of options, countless possibilities, and designs that elevate the living experience.



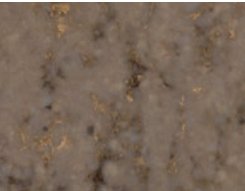
COTTAGE ASH VDL Y0524K-16



ARCTIC DUNE SS 9253CM



CALACATTA AQUILEA QTZ Q4056



MEHANDI QTZ Q4004



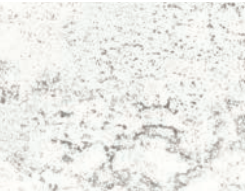
TWEEDISH PEWTER VDL Y0512-38



DUSK ICE SS 9203CE



CHILLY AQUA VDL Y0502-60



ARDEN PARK CARRERA VDL Y0371K-22



COTE D'AZUR NOIR HPL 5006K-07



MARMO BIANCO HPL 1885K-07



BLACK VELVET HPL 15505-31



MARBLE FALLS QTZ Q4033



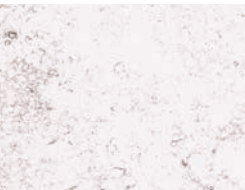
GREY LACE SS 922455



WHITE CASCADE HPL 5003-38



ANTIQUE MARULA PINE HPL 8216K-28



SALAR QTZ Q4028



GREY LAKE QTZ Q1009



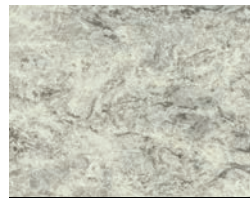
DUOMO QTZ Q4007



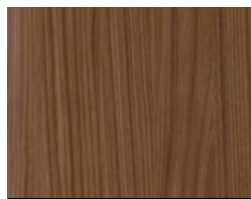
PIEDRA FLOR VDL
Y0497-38



OYSTER SEQUOIA HPL
5002K-07



ITALIAN WHITE DI PESCO HPL
4954K-22



WALNUT HEIGHTS HPL
7965K-12



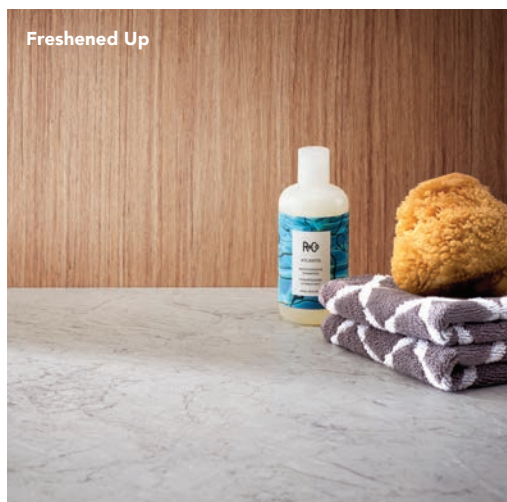
EUROPA SS
9210CM



CALACATTA VOLEGNO QTZ
Q4057



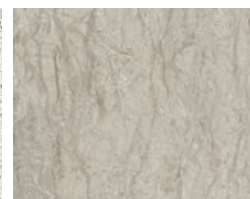
THINSCAPE



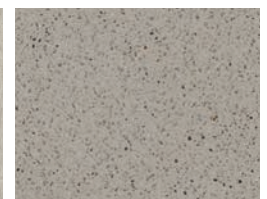
Freshened Up



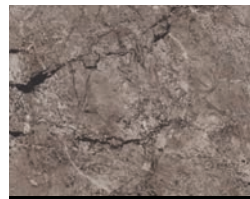
RIO UPANO QTZ
Q3008



SIERRA CASCADE HPL
5005-38



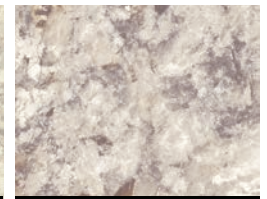
KIMBERLITE SS
9215CE



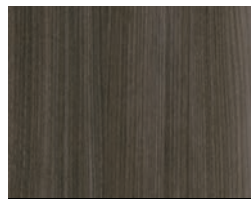
ANDORRA FOG HPL
4999K-22



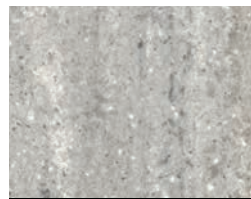
DESERT WIND QTZ
Q4031



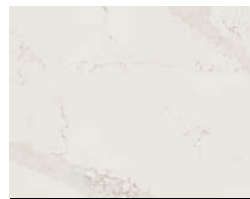
SPRING CARNIVAL HPL
1876K-35



SKYLINE WALNUT HPL
7964K-12



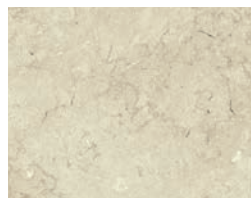
GREY BEOLA SS
9218CM



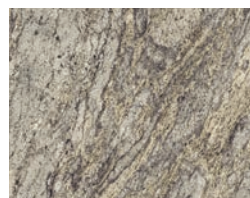
CALACATTA PASTINO QTZ
Q4058



CALACATTA SERCHIO QTZ
Q4059



HEBRON WHITE HPL
1888K-22



GRANITO AMARELO HPL
1878K-35



WETWALL

The luxury collections by Premier EuroCase offer the perfect balance of style and durability in an incredibly fast turnaround time. Made in North America using only the highest quality materials, latest technologies and advanced manufacturing processes, every piece produced by Premier EuroCase is guaranteed to leave an impression.

PE Premier Eurocase

These exceptional panels consist of a premium quality MDF substrate with a co-extruded polymer high-gloss acrylic top layer. The core material is carefully selected by Premier to have low surface variance, so the surface is not flawed by substrate imperfections.

The panels are PUR (polyurethane) laminated inside a Class-100 (ISO 5) cleanroom, which is a manufacturing process that guarantees the panels are as close to a perfect product as technologically possible.

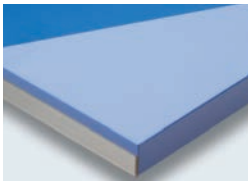
Both panel collections are available in a multitude of different colors options. Standard panel size is 4' x 8' available in 1/4" and 3/4" thicknesses. We can process panels into finished components, such as cabinet doors and drawer fronts, with matching laser edgebanding.

Both collections are well-suited for interior vertical surfaces such as kitchen cabinets, vanities, closets, furniture, as well as store fixtures & displays.

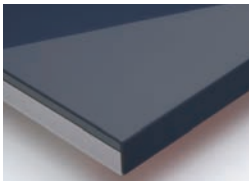


Color Options.

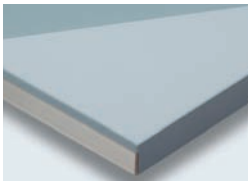
Reflekt



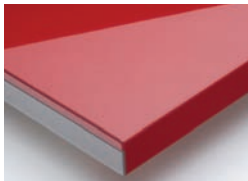
REFLEKT METALLIC BLUE



REFLEKT METALLIC NAVY



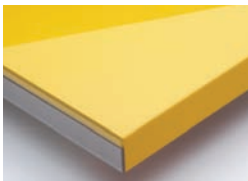
REFLEKT METALLIC SAGE



REFLEKT METALLIC RED



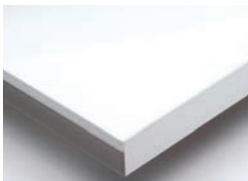
REFLEKT METALLIC ORANGE



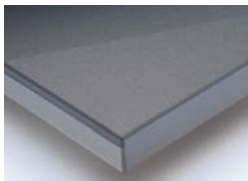
REFLEKT METALLIC FLY YELLOW



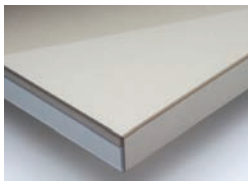
REFLEKT METALLIC CORSA RED



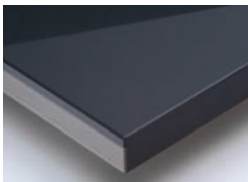
REFLEKT METALLIC PEARL WHITE



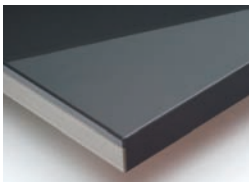
REFLEKT METALLIC GREY



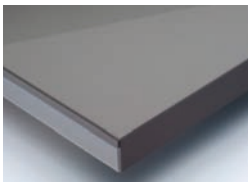
REFLEKT METALLIC BEIGE



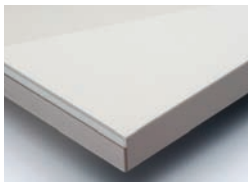
REFLEKT METALLIC BLACK



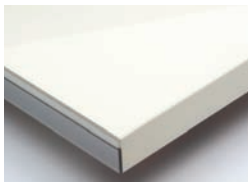
REFLEKT METALLIC DARK GREY



REFLEKT METALLIC STONE

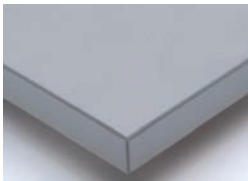


REFLEKT METALLIC PEBBLE

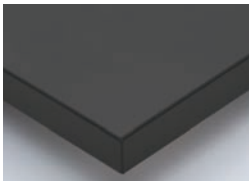


REFLEKT METALLIC CREAM

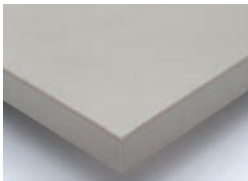
UltraMatte



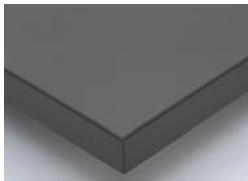
ULTRAMATTE METALLIC SILVER



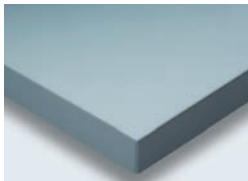
ULTRAMATTE METALLIC STARLIGHT



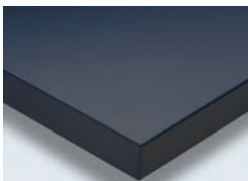
ULTRAMATTE METALLIC BEIGE



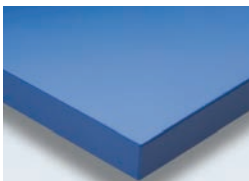
ULTRAMATTE METALLIC GREY



ULTRAMATTE METALLIC SAGE



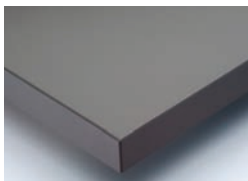
ULTRAMATTE METALLIC NAVY



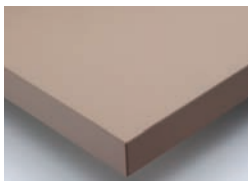
ULTRAMATTE METALLIC BLUE



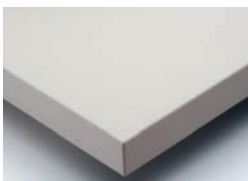
ULTRAMATTE METALLIC BLACK



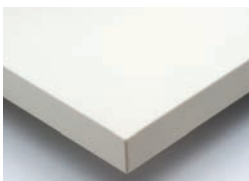
ULTRAMATTE METALLIC STONE



ULTRAMATTE METALLIC BEIGE



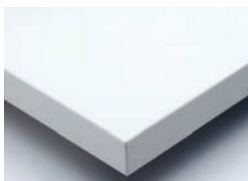
ULTRAMATTE METALLIC PEBBLE



ULTRAMATTE METALLIC CREAM



ULTRAMATTE METALLIC PURE WHITE



ULTRAMATTE METALLIC WHITE

Built on a history of over 130 years of American craftsmanship, Boos Block® surfaces fill your kitchen with timeless tradition in countertop appearance while maintaining a natural food safe element for food preparation.

BB John Boos Butcher Block

John Boos & Co. are experts in handcrafting American Hardwoods into quality products of beauty, durability and function. The Boos Block® brand represents John Boos & Co.'s commitment to quality and is proudly displayed as the final touch to many of their heirloom quality products.

North American Hard Rock Maple is the core species of the Boos Block legacy and is also one of the most durable and sought after food preparation surfaces. Pride and Craftsmanship are the key ingredients in everything that John Boos does.

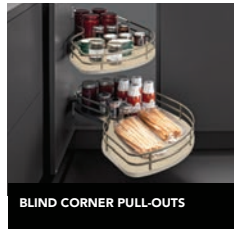
Aetna Building Solutions is proud to represent this great American company and its fine products.



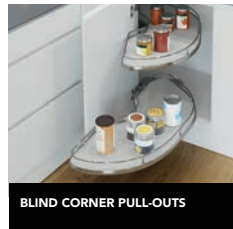
Hardware choices.



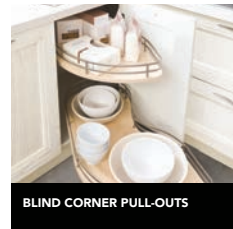
POCKET DOOR SYSTEMS



BLIND CORNER PULL-OUTS



BLIND CORNER PULL-OUTS



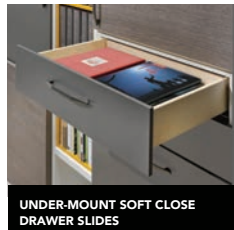
BLIND CORNER PULL-OUTS



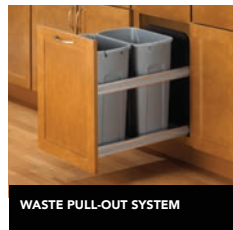
PANTRY PULL-OUTS



WASTE PULL-OUTS



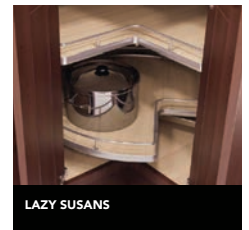
UNDER-MOUNT SOFT CLOSE
DRAWER SLIDES



WASTE PULL-OUT SYSTEM



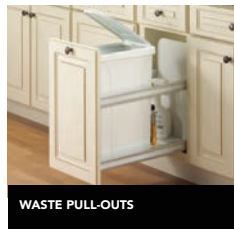
BASE FILLER STORAGE UNITS



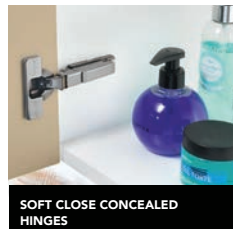
LAZY SUSANS



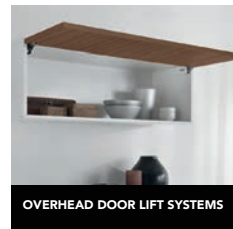
PANTRY PULL-OUTS



WASTE PULL-OUTS



SOFT CLOSE CONCEALED
HINGES



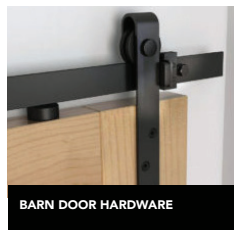
OVERHEAD DOOR LIFT SYSTEMS



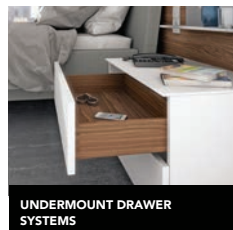
WINE STORAGE SYSTEMS



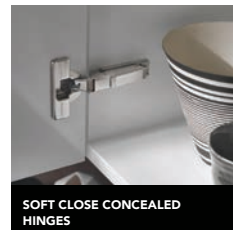
PREMIUM WASTE PULL OUTS



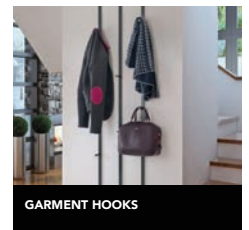
BARN DOOR HARDWARE



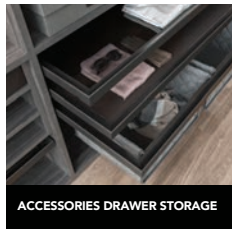
UNDERMOUNT DRAWER
SYSTEMS



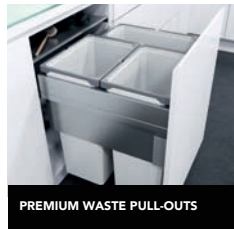
SOFT CLOSE CONCEALED
HINGES



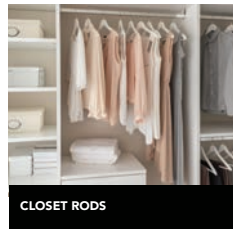
GARMENT HOOKS



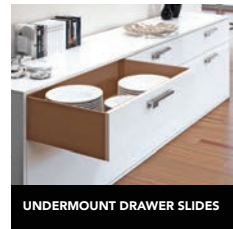
ACCESSORIES DRAWER STORAGE



PREMIUM WASTE PULL-OUTS



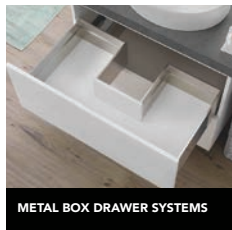
CLOSET RODS



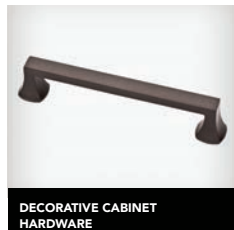
UNDERMOUNT DRAWER SLIDES



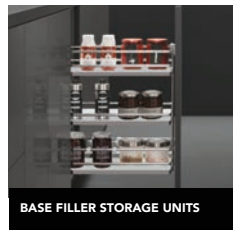
METAL BOX DRAWER SYSTEMS



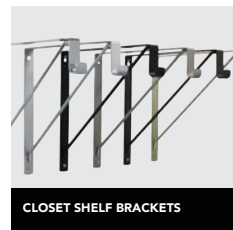
METAL BOX DRAWER SYSTEMS



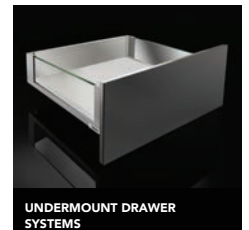
DECORATIVE CABINET
HARDWARE



BASE FILLER STORAGE UNITS



CLOSET SHELF BRACKETS



UNDERMOUNT DRAWER
SYSTEMS

SALICE

**VAUTH
SAGEL**

KV
KNAPE & VOGT

USFUTABA
FURNITURE

LIBERTY HARDWARE
MANUFACTURING CORPORATION

Schedules are tight.
Projects cost more.
If your number one
concern is making
sure you get the
right product, at the
right place – and by
yesterday – you'll feel
right at home.

Finding more ways to react
faster to our customers' needs
is what drives Aetna Building
Solutions:

- With sales and support staff and inventories in Chicago, Rockford, IL, Indianapolis, IN and White Bear Lake, MN, our Midwest footprint helps put all of our resources in easy reach.
- Carrying 500,000 sq. ft. of inventory is the only way to meet our customers' needs every day, all the time.
- We're known by the companies we keep: the biggest, and the best, suppliers in all of the product categories we distribute.
- Sourcing the best-performing materials for building projects has never been more challenging. We have a wealth of experience and product specialists in every category to help guide our customers in the right direction.



Home sweet Aetna.

Surfaces

- Wilsonart® Quartz: Available in dramatic new designs.
- Wilsonart® High Pressure Laminates (HPL): With hundreds of designs to choose from.
- Wilsonart® Specialty Laminates: A growing range of specialty surface solutions, including Decorative Metals, SOLICOR, Fire-Rated, High Wear and many others.
- Wilsonart® Solid Surface and Sinks: A seamless, nonporous and hygienic performance surface; ideal for the retail, healthcare and food service industries.
- Wilsonart® Adhesives: Offer unparalleled bonding performance for High Pressure Decorative Laminate and other surfacing products.
- JohnBoos Butcher Block Tops: Stunning kitchen countertops, safe and sensible food prep surfaces for culinary professionals, to sturdy industrial workbench tops.

Composites

- Wilsonart® TFL Panels: Over 200 matching woodgrains, solids and patterns.
- Arauco Particleboard: Standard, Plus, Fire-Rated, and Ultra Low Emitting Formaldehyde (ULEF).
- Roseburg TFL and Particleboard: Featuring Ultrablend, SkyBlend, and MDF.
- Arauco Trupan MDF: From locally produced high density panels to Radiata Pine Ultralight MDF.
- Weyerhaeuser MDF (Plum Creek): Made from western softwoods known for their low-abrasive content and light color.
- Modern Mill/Acre Board: All the warmth of wood but none of the disadvantages. It's water and weather resistant, making it ideal for outdoor kitchens, patios, and exterior millwork.

Plywood

- Columbia Forest Products: North America's largest manufacturer of hardwood plywood; a leading producer of hardwood veneer faces.
- Timber Products Company: A full range of hardwood plywood; a top manufacturer of hardwood veneer faces.
- Pro-Ply Custom Plywood: A leading manufacturer of hardwood, softwood and custom plywood, specializing in high quality products.
- Roseburg Forest Products: SkyPly® hardwood plywood offers a virtually unlimited number of options for faces, backs, finishes, cores and veneers.
- Weyerhaeuser: One of the largest sustainable forest products companies in the world – and an excellent source for softwood plywood.
- Bessemer Plywood Corp.: A producer of high-quality Aspen and northern softwood plywood.
- Import Hardwood and Softwood Plywood: A growing selection from around the world. Products range from decorative premium grades to common industrial grades.

Hardwood Lumber

Species:

- Hard Maple (Northern)
- White Oak
- Walnut
- Yellow Poplar
- Ash
- Aspen
- Red Oak (Northern)
- Red Oak (Appalachian)
- Red Oak (Rift and Quartered)
- White Oak (Rift and Quartered)
- Yellow Birch
- Cherry (Pennsylvania)
- Aromatic Cedar
- Soft Maple (Red Leaf)
- C & Better White Pine
- D & Better White Pine
- White Pine
- Superior Alder
- Premium Alder
- German Beech
- African Mahogany
- Aframosia
- Red Grandis
- Cypress

Grades and Sizes:

- FAS1F & Better
- Select & Better
- 6'-7' Selects
- Common Grades

Thicknesses:

- 4/4
- 5/4
- 6/4
- 8/4
- 10/4
- 12/4

Hardware

- Salice: A complete product line of concealed hinges, drawer slides and sliding door systems.
- Liberty Hardware: High quality decorative and functional hardware at an exceptional value.
- Vauth Sagel: Specializing in storage solutions that reflect the latest in environmental awareness.
- U.S. Futaba, Inc: Bringing the best in functional and decorative hardware to the North American marketplace.
- Knappe & Vogt (KV): Precision euro-style and utility slide systems; wall-attached shelving; kitchen, closet and bath storage; office and healthcare ergonomic products.
- Hettich: Ingenious drawer systems to suit any application.
- Titus Plus: Tekform family of double wall drawers are simple to mount and come with integrated soft closing.
- Premier Eurocase: Reflekt and UltraMatte panels consist of premium medium density fiberboard (MDF) with a co-extruded polymer acrylic top layer.

Your One Source for Building Solutions.

Spend Less Time Searching, More Time on the Job!

With Aetna's OneSource eCommerce portal, there's no time to waste. You get instant access to Aetna's vast inventories and the industry's best brands of building solutions. Now you can spend less time looking, and more time doing what you do best: designing, building making things better.

It's as easy as point and click. Submit your application today, start shopping tomorrow.

www.aetnaplywood.com/source



Maywood, IL
1401 St. Charles Rd.
Maywood, IL 60153
P 708.343.1515
F 708.343.1616

Rockford, IL
1931 Eleventh St.
Rockford, IL 61104
P 815.968.0921
F 815.968.4720

Indianapolis, IN
6350 Brookville Rd.
Indianapolis, IN 46219
P 317.353.6281
F 317.356.3503

White Bear Lake, MN
4250 Otter Lake Rd.
White Bear Lake, MN 55110
P 651.407.2800
F 651.407.2801

Cicero, IL
4700 West 19th St.
Cicero, IL 60804
P 773.847.7397
F 773.847.7798

www.aetnaplywood.com