

THINSCAPE® TABLETOP FABRICATION.

EASY TO FABRICATE. EASY TO INSTALL.

WHAT ARE THINSCAPE® PERFORMANCE TOPS?

- A new engineered composite slab that is only 1/2-inch thick
- A self-supporting material that does not require a substrate for installation
- Both sides of the slab feature the design and texture, paired with a coordinating solid color core
- Quality, durability, and structural integrity make THINSCAPE® easier to handle and less susceptible to breakage during fabrication, shipping, and installation.

HOW IS THINSCAPE® MADE?

Layered papers are saturated with resins and pressed under high heat to outperform nearly any surface on the market.

HOW DO I FABRICATE A THINSCAPE® PERFORMANCE TABLETOP?

TOOLS REQUIRED FOR FABRICATION

- Panel saw, circular saw, or skill saw
- Cordless drill, drill bit, and hammer
- Triple-chip cutting blades with a carbide tip and a negative hook
- 3/4 hp router recommended for straight cuts
- 1 1/2 hp router recommended for routing edges
- Router bit recommendation: two-flute carbide with 3/8" or 1/2" shank

FABRICATION GUIDELINES

CUTTING: Use a vertical panel saw, circular saw or jig saw to rough cut THINSCAPE®. Choose the right blade for the density of THINSCAPE®: Triple chip grind, negative to no hook, with carbide tips.

EDGE PROFILING: Can be given a flat, thumbnail, or reverse knife/shark nose profile. Set the profile bit using a straight edge. Limiting the amount of material removed will extend the life of the bit.

SANDING AND FINISHING: Sanding and finishing is only required on the edges – not the surface. Use a 4-step finishing method using a random orbital sander.

GENERAL TABLETOP FABRICATION

Supporting your THINSCAPE® composite material is critical when choosing table bases. Choose a base that will provide the necessary support and balance for your tabletop. 36" or 42" tabletops are recommended, and larger tops will require additional support. Single corner legs are not recommended unless additional support or framing is applied. At a minimum, supports are required every 24". Place supports no closer than 1" (25.4mm) and no further than 3" (76.2mm) from the sides of your cutout.

HOW DO I INSTALL A THINSCAPE® PERFORMANCE TABLETOP?

TOOLS REQUIRED FOR INSTALLATION

- 2-Part Acrylic Epoxy — Plastic Welder
- Routers — Plunge/Profile
- Skill Saw, Track Saw, Panel Saw (use individually or in combination)
- Orbital Finishing Sander
- Clamps
- Sanding Paper
- Finishing Pad
- Straight Bits
- Profile Bits
- Denatured Alcohol
- Tape Measure

FABRICATION TECHNIQUES

OPTION 1: Keep Nut Inserts (IM2S-P1.4-20/H6)

Purchase Keep Nut inserts:
chemical-concepts.com



OPTION 2: Thread-cutting screws

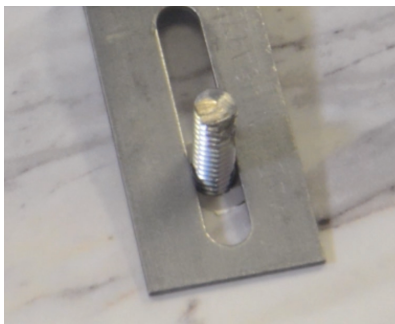
Purchase appropriately sized Type F point thread-cutting screws with machine screw thread and blunt tapered point, having multi-cutting edges and chip cavities

OPTION 1: KEEP NUT INSTALLATION

- THINSCAPE® can be fastened to the table base using Keep Nut inserts threaded stems and wing nuts
- Pre-mark holes by placing table base on backside of the slab and marking with a pencil
- Pre-drill holes using Keep Nut drill bit (11.8mm) and stop collar
- Using setting tool and hammer, insert Keep Nut inserts into pre-drilled holes by tapping into place
- Insert thread stems, align table base onto stems, and use wing nuts to tighten

OPTION 2: THREAD-CUTTING SCREW INSTALLATION

- THINSCAPE® can be fastened to the table base using a proper-sized thread-cutting screw
- Pre-mark holes by placing table base on backside of the slab and marking with a pencil
- Pre-drill holes using appropriate drill bit and stop collar
- Align table base with pre-drilled holes and insert thread-cutting screws and tighten



**NEED MORE FABRICATION AND
INSTALLATION TIPS? CHECK OUT
THIS VIDEO.**

WATCH VIDEO



Maywood, IL
1401 St. Charles Rd.
Maywood, IL 60153
P: 708.343.1515
F: 708.343.1616

Rockford, IL
1931 Eleventh St.
Rockford, IL 61104
P: 815.968.0921
F: 815.968.4720

Indianapolis, IN
6350 Brookville Rd.
Indianapolis, IN 46219
P: 317.353.6281
F: 317.356.3503

White Bear Lake, MN
4250 Otter Lake Rd.
White Bear Lake, MN 55110
P: 651.407.2800
F: 651.407.2801