

multifamily spaces | residential spaces



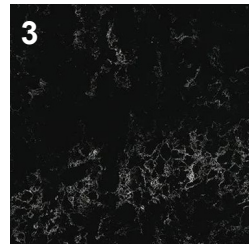




**SF257 Verde**  
ARAUCO PRISM® TFL



**5041 Granito Cascata**  
WILSONART® LAMINATE



**Q4062 Volcanic Glacier**  
WILSONART® QUARTZ



**8254 Sabine Walnut**  
WILSONART® LUJO

# Where Design Meets Emotion

In multifamily and residential spaces, materials do more than fill a room—they define how it *feels*. The right *texture*, *tone*, and *finish* can transform a space from sterile to soulful, from functional to *truly livable*. For architects and designers, every surface is a storytelling opportunity—a chance to evoke comfort, warmth, and belonging. When chosen with intention, materials don’t just support the design—they bring it to life and make *it feel like home*.



Solutions  
You’ll Love.



Services You Can  
Count On.



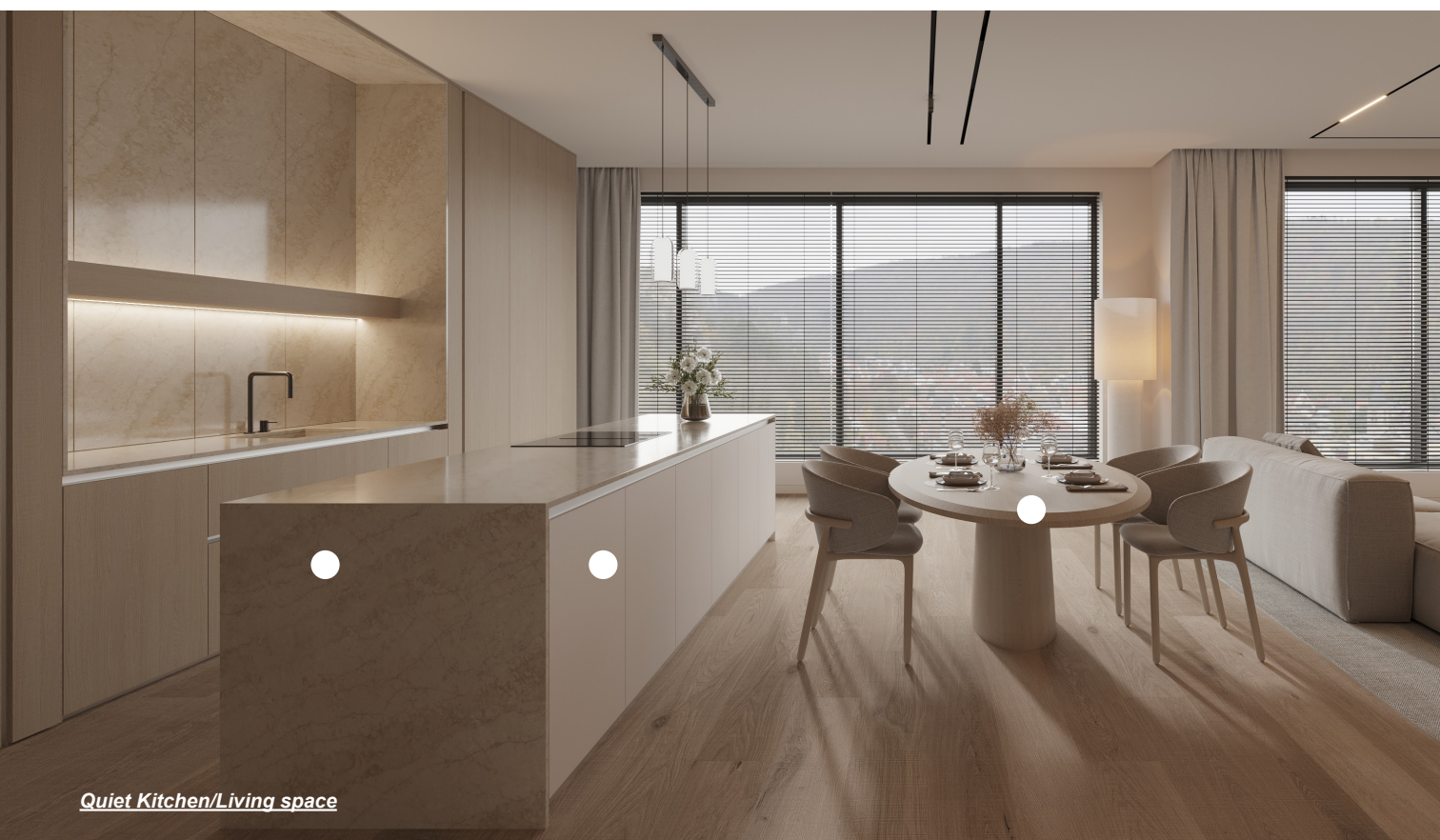
A Team  
Who Cares.



Why **Choose Aetna Building Solutions** as Your Distributor?







*Quiet Kitchen/Living space*

# The Art of Living Well

In the quiet of your personal retreat—whether bedroom, living space, or study—every material choice whispers a story of comfort, elegance, and intention. Sleek surfaces, rich textures, and moody palettes don't just complement modern design—they ignite emotion, elevate form, and make solitude feel sacred. Choose finishes that don't just fill a space, but stir the soul.

## Quiet Kitchen/Living Space

*Wilsonart Quartz*  
• *Glencoe*

*ARAUCO Prism TFL*  
• *Willow*

*White Oak (Aetna Lumber)*

## Neutral Bedroom

*Wilsonart Quartz*  
• *Altamonte*

*AetnaPly IDP*

## Dark Moody Office

*Wilsonart Traceless*  
• *Smokey velvet Elm*  
• *Slate velvet*

## Blue Bedroom

*Wilsonart Traceless*  
• *Acorn Velvet Elm*  
• *Peacock Velvet*

## Modern Waste Bin

*Salice*  
• *Wire Pull Satin Chrome*  
• *Vibo Waste Bin Single or Double*



*Dark Moody Office*



*Neutral Bedroom*



*Blue Bedroom*



*Modern Waste Bin*





*Shared Residential Dining*



*Cool Common Area*

# Where Connection Takes Shape

Shared spaces are more than transitional zones—they’re where conversations spark, quiet glances linger, and community comes alive. Thoughtful materials and modern textures create an atmosphere that feels both elevated and inviting, wrapping every moment in warmth and intention. In the right hands, design doesn’t just shape space—it deepens connection.



*Industrial Common Area*



*Floating Shelves*

## Cool Common Area

- Wilsonart Quartz
- Yamuna Quartzite

Walnut (Aetna Lumber)

## Shared Residential Dining

- Wilsonart Solid Surface
- Arctic Drift

ARAUCO Prism TFL

- Black

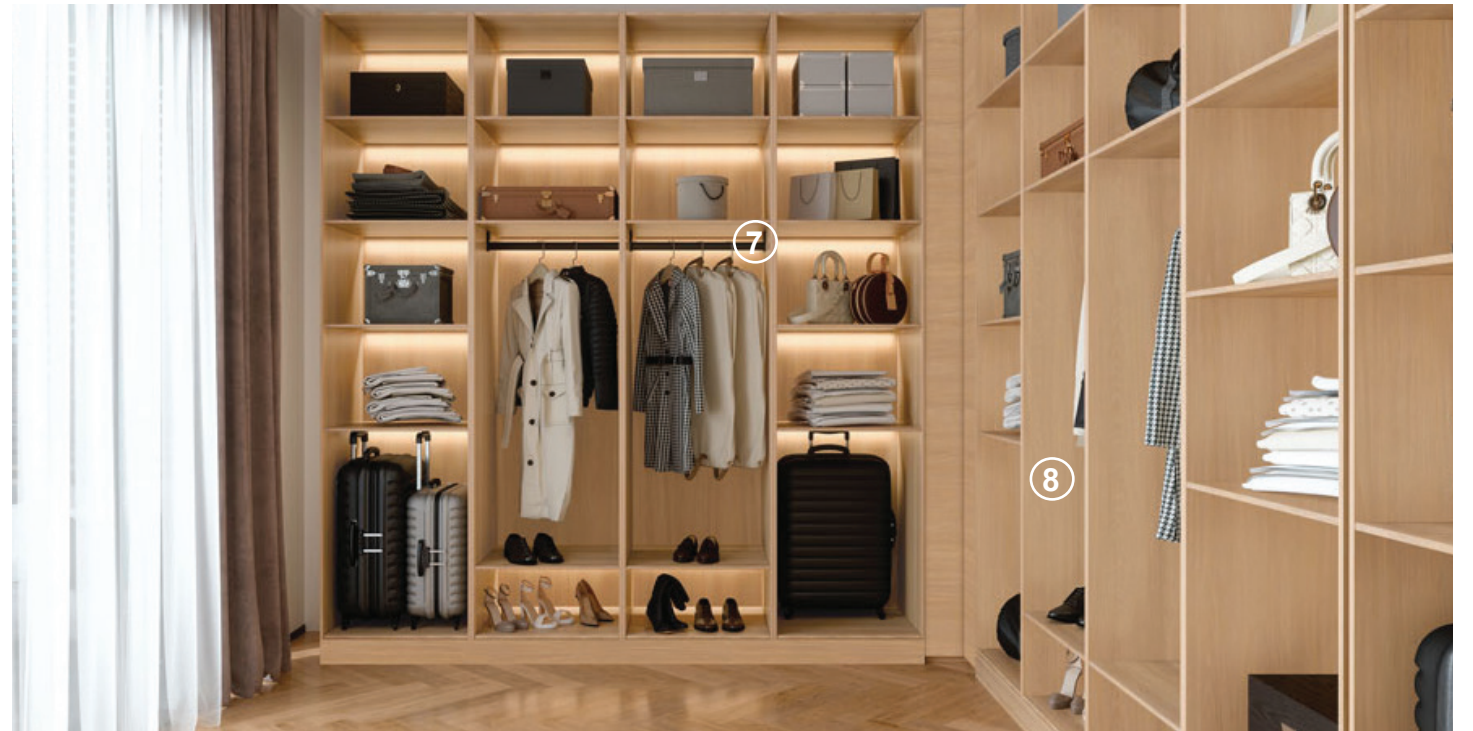
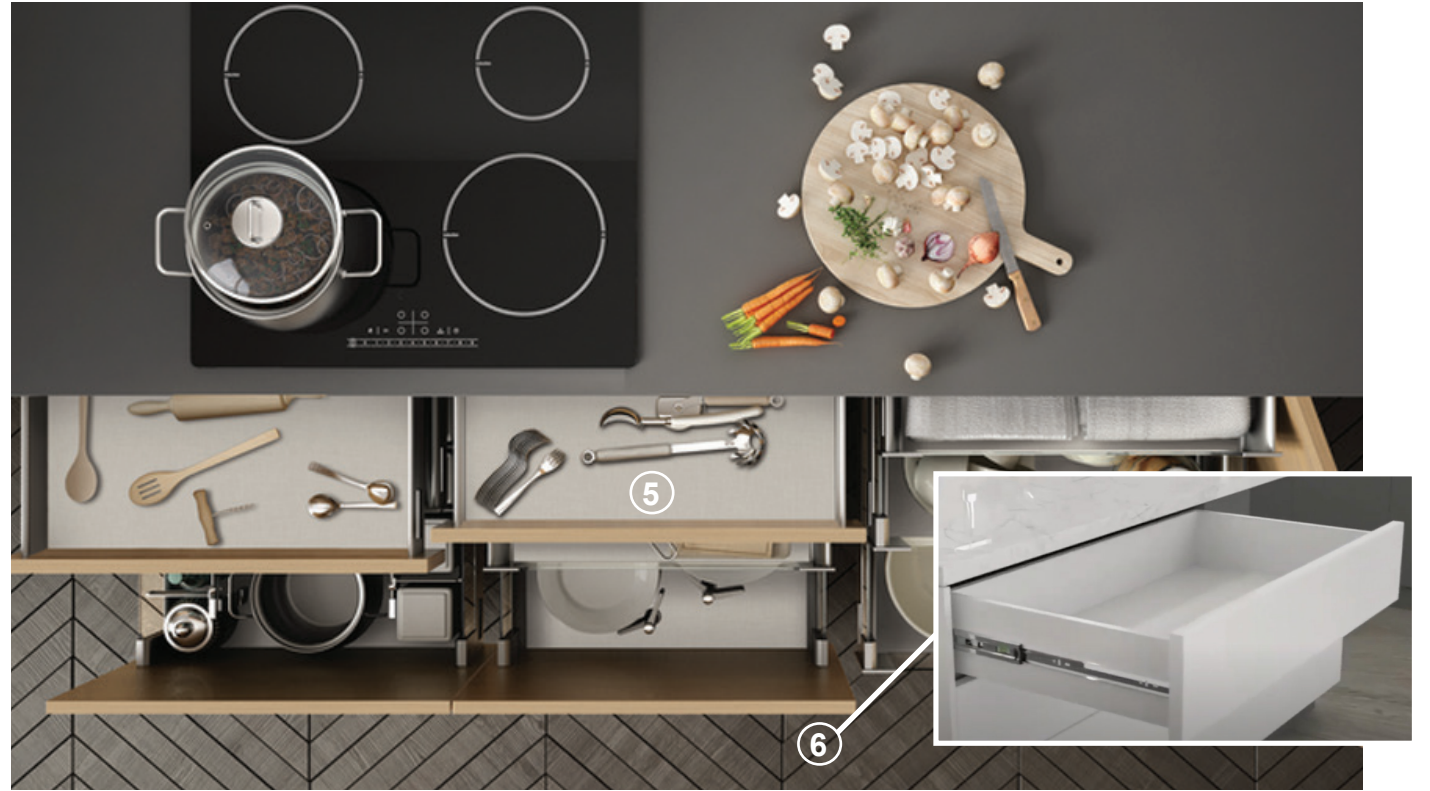
## Industrial Common Area

- Wilsonart LUJO
- Walnut PB Natural

## Floating Shelves

- Hovr
- Slim Bracket





**WF448 Seared Oak**  
ARAUCO PRISM® TFL



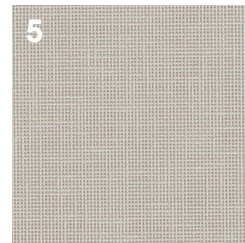
**Aetna Lumber**  
Walnut



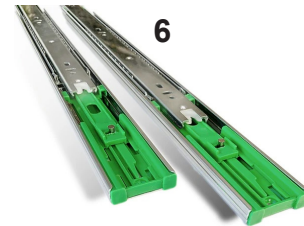
**Q4096 Bregava**  
WILSONART® Quartz



**8276 Cherry PB Auburn**  
WILSONART® LUJO



**4943 Classic Linen**  
WILSONART® Laminate



**Ball Bearing Slides**  
FGV



**Closet Rod Round**  
Steel Chrome  
Salice



**8258 Harding Oak**  
WILSONART® LUJO





*Residential Bathroom*

## Designed for the Unseen Moments

Behind every closed door—whether a closet, cabinet, or quiet bathroom retreat—lives the poetry of order and elegance. Materials chosen with care transform the everyday into something deeply personal, where even storage becomes an experience of beauty and balance. In these quiet spaces, design becomes a gentle act of self-respect.

### Residential Bathroom

*Wilsonart Wetwall*

- Calacatta Statuario

*White Oak (Aetna Lumber)*

### Dining Shelves/Storage

*Wilsonart Laminate*

- Linen Velvet

### Light Green Bathroom

*Wilsonart Quartz*

- Ostler Peak

### Modern Walk-in Closet

*ARAUCO Prism TFL*

- Quarry

### Lobby Restroom

*Wilsonart Wetwall*

- Birch Branches



*Dining Shelves/Storage*



*Light Green Bathroom*



*Modern Walk-in Closet*



*Lobby Restroom*





## Want To Learn More About These Products/Brands?



**Wilsonart**  
ENGINEERED SURFACES

**Wilsonart**, headquartered in Austin, Texas, is a global manufacturer of engineered surfaces like laminates, quartz, and solid surface. They focus on coordinated designs for furniture, countertops, and surfaces in residential, commercial, and institutional spaces.



arauco  
**PRISM**

**ARAUCO** is a global leader in sustainably produced forest products, including composite panels, TFL and plywood products. They serve construction, industrial, and retail markets with high-quality products and a strong commitment to sustainability and customer service.



**SALICE**

**Salice**, founded in Italy in 1926, is a global leader in premium furniture hardware. With over 90 years of experience, they specialize in innovative, high-quality hinges, slides, and lift systems for modern cabinetry and furniture design.



FGV  
AMERICA

**FGV** (Formenti & Giovenzana) specializes in functional furniture hardware, offering innovative hinges, slides, and drawer systems. Known for quality and affordability, FGV designs solutions that enhance furniture functionality, usability, and performance across a range of applications.



**hovr**

**Hovr** designs and sells patented floating shelf hardware made from aircraft-grade aluminum. Engineered for easy installation, their system is 13 times stronger than traditional brackets, offering secure, stable, and visually appealing shelves with high weight capacity.



**LUMBER**



**PLYWOOD**

**Aetna Building Solutions** is a Midwest-based wholesale distributor specializing in plywood, hardwood lumber, decorative surfaces, and composite panels. They serve commercial and residential markets, including multi-family, hospitality, healthcare, and retail fixtures, with a focus on quality and reliable supply.

## Contact Us

*\*Actual colors may vary from image. Please order a sample for best color representation.*

**Maywood, IL**  
1401 St. Charles Rd.  
Maywood, IL 60153  
P: 708.343.1515  
F: 708.343.1616

**Rockford, IL**  
1931 Eleventh St.  
Rockford, IL 61104  
P: 815.968.0921  
F: 815.968.4720

**Indianapolis, IN**  
6350 Brookville Rd.  
Indianapolis, IN 46219  
P: 317.353.6281  
F: 317.356.3503

**White Bear Lake, MN**  
4250 Otter Lake Rd.  
White Bear Lake, MN 55110  
P: 651.407.2800  
F: 651.407.2801

**Lexington, KY**  
2433 Mackinwood Dr.  
Lexington, KY 40510  
P: 859.226.5687  
F: 859.226.0099