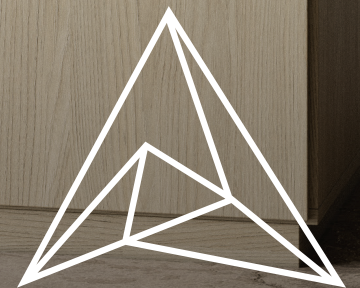


arauco
PRISM
DESIGN WITH INTENTION

2024-26
COLLECTION



Design with Intention



SUSTAINABLE. STYLISH. SMART.



www.aetnaplywood.com

arauco

arauco
PRISM



Design with Intention

WF476 Wright Walnut

ARAUCO Prism® TFL is a surfacing solution that empowers you to harmonize aesthetics, performance, and environmental consciousness. Stay aligned with trend-worthy designs while balancing your client's expectations for a well-thought-out space that delivers value, sustainability and longevity.

Interested in delving deeper into the distinctions between TFL and alternative surfacing materials? Learn about TFL's production process, its sustainable features, and the myriad of interior applications where it shines.

Take one of our CEU's! We offer these courses for qualified groups in-person and through regularly scheduled virtual presentations. We are also making distance learning formats available, so that you can access it whenever, wherever. Our CEU's are approved for a 1-hour credit for IDCEC or AIA.

Scan the code to get started:



Follow us



www.prismTFL.com



SF258 Roja

WF475 Casual Chestnut

Composite Panels & Substrates

PRISM TFL is available with a range of ARAUCO's standard and specialty panel substrates and grades so that we can accommodate your design considerations and specifications. ARAUCO manages its own inventories to maintain a current and balanced design offering and a dependable supply you can count on.

Please contact your account representative to discuss our product grades, and for production capability and minimums.

Sustainability

Our substrates are made from wood fiber that is sourced as recycled, recovered, and/or FSC® certified (FSC-C019364) assuring that the wood used in manufacturing is derived from ethical sources. PRISM TFL is manufactured using composite panels that are certified to EPA TSCA Title VI/CARB-2 and meets relevant green building standard requirements, including those found in LEED, Green Globes, IgCC, and the CALGreen Code.

ARAUCO offers cradle-to-gate information through the industry-wide Environmental Product Declarations (EPDs) for particleboard and MDF manufactured in North America.



LEED Category			
Raw Materials Sourcing (Recycled Content)	Raw Materials Sourcing (Certified Wood)	Material Ingredient Reporting	Low Emitting Composites
●	●	●	●





Madera Texture

WF375 Diva



Madera Texture

WF394 Arctic Groovz



Taccion Texture

WF432 Alabaster



Boreal Texture

WF459 Abiqua Pine



Boreal Texture

WF464 Urban



Velvet Texture

WF449 Sarek Ash



Velvet Texture

WF450 Bergen Ash



Velvet Texture

WF451 Narvik Ash



Suede Texture

WF275 Hardrock Maple



Suede Texture

WF270 Cabinet Maple



Madera Texture

WF475 Casual Chestnut

NEW



Suede Texture

WF229 Merit Maple



Boreal Texture

WF447 Toasted Oak



Boreal Texture

WF444 Tumalo Pine



Madera Texture

WF340 Aria



Madera Texture

WF393 Concrete Groovz



Taccion Texture

WF433 Argento



Boreal Texture

WF357 Sandalwood



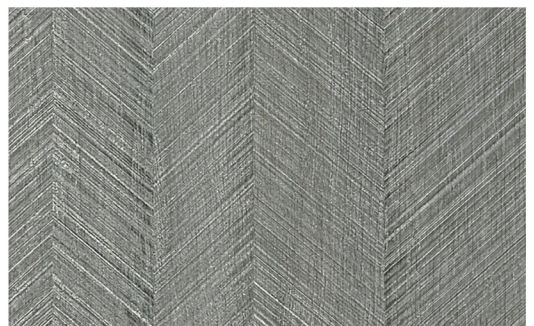
Boreal Texture

WF445 Sahalie Pine



Taccion Texture

WF435 Palomino



Boreal Texture

WF456 Enigma



WF474 Endless Elm

Madera Texture

NEW



WF397 Stromboli

Boreal Texture



WF457 Castanho

Boreal Texture



WF442 Chique

Velvet Texture



WF121 Burma Cherry

Madera Texture



WF466 Rogue Valley Pear

Velvet Texture



WF467 Pelee Island Pear

Boreal Texture



WF440 Ginger

Taction Texture



WF452 Karuna Ash

Velvet Texture



WF310 Talas Cherry

Suede Texture



WF476 Wright Walnut

Madera Texture

NEW



WF341 Soprano

Madera Texture



WF458 Presten Ash

Velvet Texture



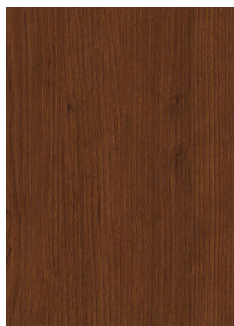
WF203 Seria

Madera Texture



WF263 Walnut Amati

Suede Texture



WF236 Ankara Cherry

Madera Texture



WF301 Noce Vettore

Madera Texture



WF468 Metro

Boreal Texture



WF434 Gibraltar

Taction Texture

Designs and textures shown represent the standard offering for **PRISM** exclusives. Please contact your local distributor or sales representative for availability.

Need larger samples or more product information? Please visit www.prismTFL.com.



Boreal Texture

WF356 Driftwood



Boreal Texture

WF377 Pewter Pine



Madera Texture

WF344 Queenston Oak



Madera Texture

WF226 Zambukka



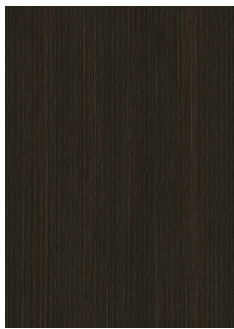
Boreal Texture

WF448 Seared Oak



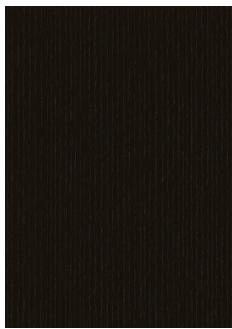
Boreal Texture

WF461 Koosah Pine



Madera Texture

WF202 Verismo



Madera Texture

WF208 Libretti



Suede Texture

WF220 Brazilian Walnut



Suede Texture

WF228 Sable Glow



Madera Texture

WF392 Licorice Groovz



Madera Texture

WF368 Linear Ash



Boreal Texture

WF462 Wallowa Pine



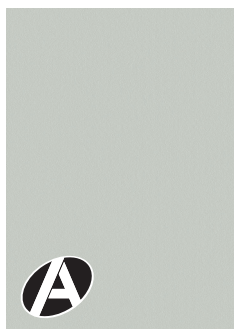
Suede Texture

AF200 Pewter Frost



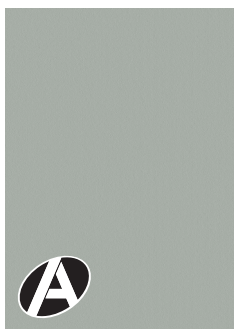
Suede Texture

AF210 Silver Frost



Suede Texture

SF208 Folkstone



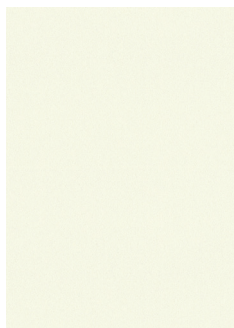
Suede Texture

SF213 Fog Grey



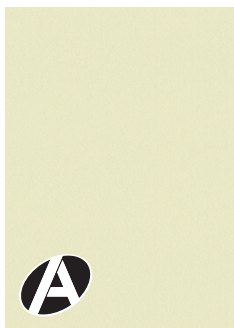
Suede Texture

AF209 Shadow Frost



Suede Texture

SF210 Antique White



Suede Texture

SF204 Opal



Suede Texture

AF232 Natural Linen



Madera Texture

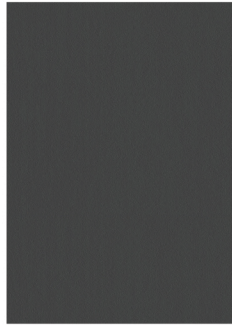
AF238 Chantilly Flax

NEW



Suede Texture

SF237 Charcoal



Suede Texture

SF239 Storm



Velvet Texture

SF230 Sienna



Velvet Texture

SF233 Fossil



Velvet Texture

SF232 Ashen



Velvet Texture

SF247 Mysterious



Velvet Texture

SF250 Duke



Velvet Texture

SF251 Celadon



Velvet Texture

SF256 Mist

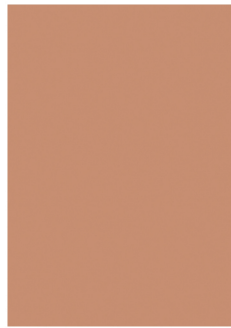


Velvet Texture

SF257 Verde

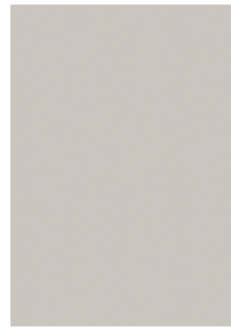


AF239 Total Eclipse



Velvet Texture

SF258 Roja



Velvet Texture

SF252 Quarry



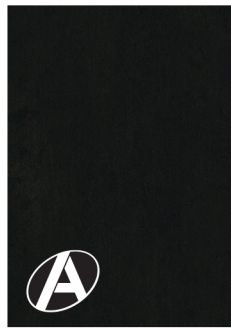
Velvet Texture

SF255 Willow



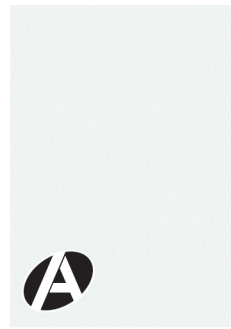
Suede Texture

AF239 Total Eclipse



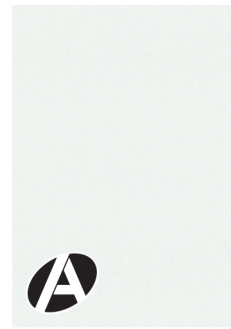
Suede texture

BLK100 Black



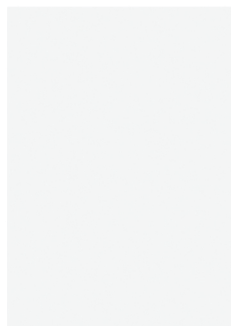
Suede texture

W300 White



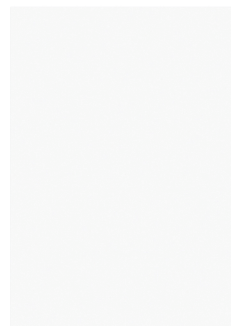
Suede texture

W100 White



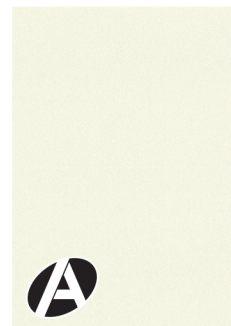
Suede texture

W920 Vogue White



Suede texture

W919 Cotton White



Suede texture

SF100 Victorian White

NEW

PRISM Symmetry



The **PRISM TFL Symmetry Program** features a wide array of complementary products. Edgebanding, HPL, 3DL, doors, wrapping and moulding products are available for the entire collection.

The partnership ARAUCO has with these suppliers will ensure that your project has a cohesive and natural look. Please refer to prismTFL.com for full listings and details within the TFL design of your choice.



HPL (High Pressure Laminate)



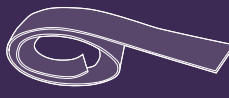
3DL



Moulding



Doors



Edgebanding



Fill Sticks



Caps

To order **PRISM** samples online, visit: www.prismTFL.com or contact us at: araucona.marketing@arauco.com

How to Specify

Qualifying designers can find us on Material Bank.



Description	Example
Design Code / Name	WF474 Endless Elm
Finish / Texture	Madera
Panel / Substrate	Ultra PB
Panel thickness and dimension thickness / Width / Length	3/4" x 49" x 97"

Contact Information

Sales and Customer Service

For general information and inquiries regarding our product lines, delivery, lead-times and other ordering:

Sales Offices

North American Headquarters
400 Perimeter Center Terrace
Suite 750
Atlanta, GA 30346
Tel: 800.261.4890

Western Regional Center
2550 Old Salem Rd. NE
Albany, OR 97321
Tel: 888.650.6302

Please consult with your sales representative when specifying. We recommend ordering and reviewing large samples from prismTFL.com prior to specifying.

Distributed by:



ILLINOIS
1401 St. Charles Rd.
Maywood, IL 60153
(708) 343-1515

ILLINOIS
1931 Eleventh St.
Rockford, IL 61104
(815) 968-0921

INDIANA
6350 Brookville Road
Indianapolis, IN 46219
(317) 353-6281

MINNESOTA
4250 Otter Lake Road
White Bear Lake, MN 55110
(651) 407-2800

KENTUCKY
2433 Mackinwood Dr.
Lexington, KY 40510
(859) 226-5687

renewables for a better life

www.aetnaplywood.com

arauco



WF474 Endless Elm